

HEATING INPUT: 40,000–120,000 BTU/H

**TWO-STAGE, MULTI-SPEED ECM  
 GAS FURNACE  
 80% AFUE**



**Contents**

Nomenclature..... 2  
 Product Specifications..... 3  
 Dimensions ..... 5  
 Accessories ..... 6  
 Airflow Data ..... 7  
 Wiring Diagram ..... 21

**Standard Features**

- Two-stage gas valve provides quiet, economical heating
- Efficient and quiet multi-speed ECM circulator motor
- SureStart<sup>®</sup> Silicon Nitride igniter designed for long igniter life
- Self-diagnostic control board
- Low constant fan speed circulates air throughout the home
- Quiet, two-speed induced draft blower
- California Low NOx emissions-compliant models available
- Can no longer be installed in California’s South Coast Air Quality Management District (SCAQMD) on or after October 1, 2019.
- AHRI Certified; ETL Listed

**Cabinet Features**

- Fully insulated, heavy-gauge steel cabinet with durable baked-enamel finish
- Multi-position installation:  
 AMEC80: upflow, horizontal left or right  
 ACEC80: downflow, horizontal left or right
- Removable bottom for side- or bottom-return applications
- Convenient left or right connection for gas/electric service
- Cabinet air leakage ≤ 2%
- Coil and furnace fit flush for most installations



\* Complete warranty details available from your local dealer or at [www.amana-hac.com](http://www.amana-hac.com). To receive the Lifetime Unit Replacement Limited Warranty (good for as long as you own your home) and 10-Year Parts Limited Warranty, online registration must be completed within 60 days of installation. Online registration is not required in California or Quebec.

|  | A | M | E | C | 80  | 040   | 4  | C  | *  | **    |  |
|--|---|---|---|---|-----|-------|----|----|----|-------|--|
|  | 1 | 2 | 3 | 4 | 5,6 | 7,8,9 | 10 | 11 | 12 | 13,14 |  |
| <b>BRAND</b><br>A- Amana® Brand  |   |   |   |   |     |       |    |    |    |       | <b>ENGINEERING</b><br>Major /Minor Revisions<br>* Not used for inventory control.  |
| <b>CONFIGURATION</b><br>M- Upflow/Horizontal<br>C- Downflow/Horizontal         |   |   |   |   |     |       |    |    |    |       | <b>NOx</b><br>N- Natural Gas<br>X- Low NOx   |
| <b>MOTOR</b><br>V- Variable Speed ECM<br>E- Multi-Speed ECM    S- Single Speed |   |   |   |   |     |       |    |    |    |       | <b>CABINET WIDTH</b><br>A- 14"    C- 21"<br>B- 17½"    D- 24½"   |
| <b>GAS VALVE</b><br>M- Modulating    S- Single Stage<br>C- Two Stage           |   |   |   |   |     |       |    |    |    |       | <b>MAXIMUM CFM</b><br>2- 800 CFM    4- 1600 CFM<br>3- 1200 CFM    5- 2000 CFM  |
| <b>AFUE</b><br>80- 80% AFUE  |   |   |   |   |     |       |    |    |    |       | <b>MBTU/h</b><br>040- 40,000 BTU/h    100- 100,000 BTU/h<br>060- 60,000 BTU/h    120- 120,000 BTU/h<br>080- 80,000 BTU/h |

|   | AMEC80<br>0403A* | AMEC80<br>0603B* | AMEC80<br>0803B* | AMEC80<br>0804B* | AMEC80<br>0804C* | AMEC80<br>0805C* | AMEC80<br>0805D* | AMEC80<br>1005C* |
|---|------------------|------------------|------------------|------------------|------------------|------------------|------------------|------------------|
| <b>HEATING CAPACITY</b>                     |                  |                  |                  |                  |                  |                  |                  |                  |
| High Fire Input (BTU/h) <sup>1</sup>        | 40,000           | 60,000           | 80,000           | 80,000           | 80,000           | 80,000           | 80,000           | 100,000          |
| High Fire Output (BTU/h) <sup>1</sup> :     |                  |                  |                  |                  |                  |                  |                  |                  |
| Natural Gas                                 | 32,000           | 48,000           | 64,000           | 64,000           | 64,000           | 64,000           | 64,000           | 80,000           |
| LP Gas                                      | 32,000           | 48,000           | 64,000           | 64,000           | 64,000           | 64,000           | 64,000           | 80,000           |
| Low Fire Input (BTU/h) <sup>1</sup>         | 28,000           | 42,000           | 56,000           | 56,000           | 56,000           | 56,000           | 56,000           | 70,000           |
| Low Fire Output (BTU/h) <sup>1</sup> :      |                  |                  |                  |                  |                  |                  |                  |                  |
| Natural Gas                                 | 22,400           | 33,600           | 44,800           | 44,800           | 44,800           | 44,800           | 44,800           | 56,000           |
| LP Gas                                      | 22,400           | 33,600           | 44,800           | 44,800           | 44,800           | 44,800           | 44,800           | 56,000           |
| AFUE <sup>2</sup>                           | 80               | 80               | 80               | 80               | 80               | 80               | 80               | 80               |
| Available AC @ 0.5" ESP                     | 1.5- 3.0         | 1.5- 4.0         | 3.0- 4.0         | 2.0- 5.0         | 2.5- 5.0         | 2.5- 5.0         | 2.5- 5.0         | 2.0- 5.0         |
| Temperature Rise Range (° F)                | 15-45 / 15-45    | 15-45 / 15-45    | 30-60 / 30-60    | 30-60 / 30-60    | 25-55 / 25-55    | 25-55 / 25-55    | 20-50 / 20-50    | 20-50 / 20-50    |
| <b>CIRCULATOR BLOWER</b>                    |                  |                  |                  |                  |                  |                  |                  |                  |
| Size (D x W)                                | 10" x 6"         | 10" x 8"         | 10" x 8"         | 10" x 10"        | 10" x 10"        | 10" x 10"        | 11" x 10"        | 10" x 10"        |
| Horsepower- RPM                             | 1/2              | 1/2              | 1/2              | 3/4              | 3/4              | 3/4              | 3/4              | 1                |
| Speed                                       | 5                | 5                | 5                | 5                | 5                | 5                | 5                | 5                |
| Vent Diameter <sup>1</sup>                  | 4"               | 4"               | 4"               | 4"               | 4"               | 4"               | 4"               | 4"               |
| No. of Burners                              | 3                | 3                | 4                | 4                | 4                | 4                | 4                | 5                |
| <b>ELECTRICAL DATA</b>                      |                  |                  |                  |                  |                  |                  |                  |                  |
| Min. Circuit Ampacity <sup>3</sup>          | 8.7              | 8.7              | 8.7              | 12.45            | 12.45            | 15.32            | 15.32            | 15.32            |
| Max. Overcurrent Device (amps) <sup>4</sup> | 15               | 15               | 15               | 15               | 15               | 20               | 20               | 20               |
| <b>SHIP WEIGHT (LBS)</b>                    |                  |                  |                  |                  |                  |                  |                  |                  |
|   | 105              | 107              | 118              | 121              | 129              | 129              | 129              | 124              |

<sup>1</sup> Natural Gas BTU/h; for altitudes 0-4500' above sea level, reduce input rating by 4% for each 1000' above 4500' altitude.

<sup>2</sup> DOE AFUE based upon Isolated Combustion System (ICS)

<sup>3</sup> Minimum Circuit Ampacity = (1.25 x Circulator Blower Amps) + ID Blower amps. Wire size should be determined in accordance with National Electrical Codes. Extensive wire runs will require larger wire sizes.

<sup>4</sup> Maximum Overcurrent Protection Device refers to maximum recommended fuse or circuit breaker size. May use fuses or HACR-type circuit breakers of the same size as noted.

**NOTES**

- All furnaces are manufactured for use on 115 VAC, 60 Hz, single-phase electrical supply.
- Gas Service Connection ½" FPT
- Important: Size fuses and wires properly and make electrical connections in accordance with the National Electrical Code and/or all existing local codes.

|   | ACEC80<br>0403A* | ACEC80<br>0603A* | ACEC80<br>0603B* | ACEC80<br>0804B* | ACEC80<br>0805C* | ACEC80<br>1005C* |
|---|------------------|------------------|------------------|------------------|------------------|------------------|
| <b>HEATING CAPACITY</b>                     |                  |                  |                  |                  |                  |                  |
| High Fire Input (BTU/h) <sup>1</sup>        | 40,000           | 60,000           | 60,000           | 80,000           | 80,000           | 100,000          |
| High Fire Output (BTU/h) <sup>1</sup>       |                  |                  |                  |                  |                  |                  |
| Natural Gas                                 | 32,000           | 48,000           | 48,000           | 64,000           | 64,000           | 80,000           |
| LP Gas                                      | 32,000           | 48,000           | 48,000           | 64,000           | 64,000           | 80,000           |
| Low Fire Input (BTU/h) <sup>1</sup>         | 28,000           | 42,000           | 42,000           | 56,000           | 56,000           | 70,000           |
| Low Fire Output (BTU/h) <sup>1</sup>        |                  |                  |                  |                  |                  |                  |
| Natural Gas                                 | 22,400           | 33,600           | 33,600           | 44,800           | 44,800           | 56,000           |
| LP Gas                                      | 22,400           | 33,600           | 33,600           | 44,800           | 44,800           | 56,000           |
| AFUE <sup>2</sup>                           | 80               | 80               | 80               | 80               | 80               | 80               |
| Available AC @ 0.5" ESP                     | 1.5- 3.0         | 1.5- 4.0         | 1.5- 4.0         | 2.0- 5.0         | 2.5- 5.0         | 2.0- 5.0         |
| Temperature Rise Range (° F)                | 15-45 / 15-45    | 30-60 / 30-60    | 25-55 / 25-55    | 30-60 / 30-60    | 30-60 / 30-60    | 20-50 / 20-50    |
| <b>CIRCULATOR BLOWER</b>                    |                  |                  |                  |                  |                  |                  |
| Size (D x W)                                | 10" x 6"         | 10" x 6"         | 10" x 8"         | 10" x 10"        | 10" x 10"        | 10" x 10"        |
| Horsepower- RPM                             | 1/2              | 1/2              | 1/2              | 3/4              | 3/4              | 1                |
| Speed                                       | 5                | 5                | 5                | 5                | 5                | 5                |
| Vent Diameter <sup>2</sup>                  | 4"               | 4"               | 4"               | 4"               | 4"               | 4"               |
| No. of Burners                              | 3                | 3                | 3                | 4                | 4                | 5                |
| <b>ELECTRICAL DATA</b>                      |                  |                  |                  |                  |                  |                  |
| Min. Circuit Ampacity <sup>3</sup>          | 8.7              | 8.7              | 8.7              | 12.45            | 15.32            | 15.32            |
| Max. Overcurrent Device (amps) <sup>4</sup> | 15               | 15               | 15               | 15               | 20               | 20               |
| <b>SHIP WEIGHT (LBS)</b>                    | 105              | 107              | 107              | 121              | 129              | 124              |

<sup>1</sup> Natural Gas BTU/h; for altitudes 0-4500' above sea level, reduce input rating by 4% for each 1000' above 4500' altitude.

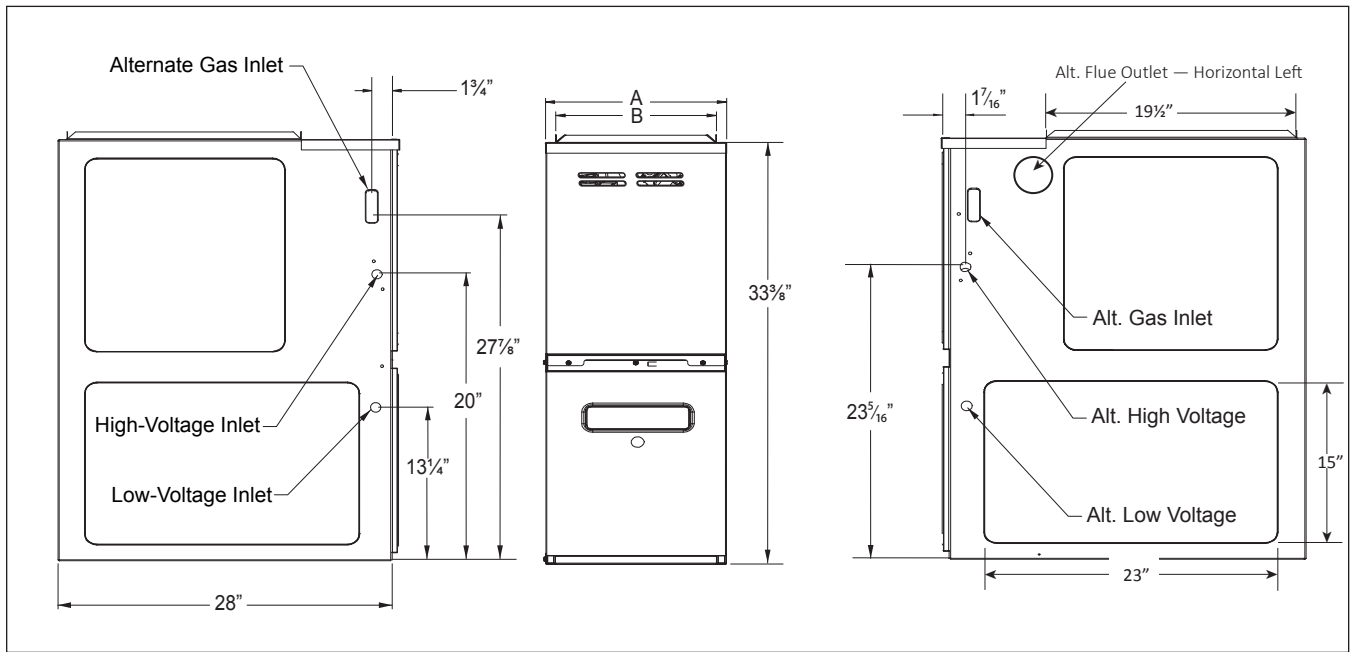
<sup>2</sup> DOE AFUE based upon Isolated Combustion System (ICS)

<sup>3</sup> Minimum Circuit Ampacity = (1.25 x Circulator Blower Amps) + ID Blower amps. Wire size should be determined in accordance with National Electrical Codes. Extensive wire runs will require larger wire sizes.

<sup>4</sup> Maximum Overcurrent Protection Device refers to maximum recommended fuse or circuit breaker size. May use fuses or HACR-type circuit breakers of the same size as noted.

**NOTES**

- All furnaces are manufactured for use on 115 VAC, 60 Hz, single-phase electrical supply.
- Gas Service Connection ½" FPT
- Important: Size fuses and wires properly and make electrical connections in accordance with the National Electrical Code and/or all existing local codes.



| MODEL        | DIMENSIONS |         |
|--------------|------------|---------|
|              | A          | B       |
| AMEC800403A* | 14"        | 12 1/2" |
| AMEC800603B* | 17 1/2"    | 16"     |
| AMEC800803B* | 17 1/2"    | 16"     |
| AMEC800804B* | 17 1/2"    | 16"     |
| AMEC800804C* | 21"        | 19 1/2" |
| AMEC800805C* | 21"        | 19 1/2" |
| AMEC800805D* | 24 1/2"    | 23"     |
| AMEC801005C* | 21"        | 19 1/2" |

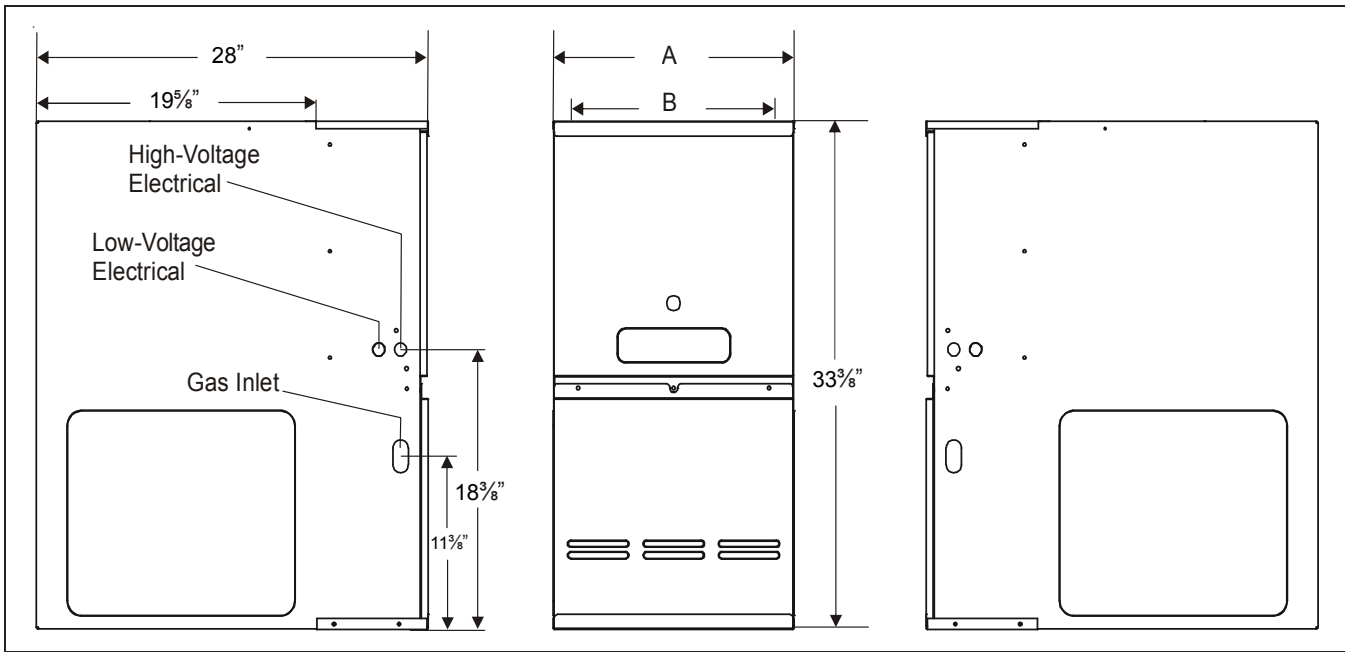
**MINIMUM CLEARANCES TO COMBUSTIBLE MATERIALS**

| SIDES | REAR | FRONT | BOTTOM | VENT |   | TOP |
|-------|------|-------|--------|------|---|-----|
|       |      |       |        | SW   | B |     |
| 1     | 0    | 3     | C      | 6    | 1 | 1   |

C = If placed on combustible floor, the floor MUST be wood ONLY.

**NOTES:**

- For servicing or cleaning, a 24" front clearance is recommended.
- Unit connections (electrical, flue, and drain) may necessitate greater clearances than the minimum clearances listed above.
- In all cases, accessibility clearance must take precedence over clearances from the enclosure where accessibility clearances are greater.
- Refer to the appropriate USA and Canadian codes:
  - In the USA: the National Fuel Gas Code NFPA 54 / ANSI Z223.1
  - In Canada: the Canada National Standard of Canada, CAN/CSA B149.1 and CAN/CSA B142.2



| MODEL        | DIMENSIONS |      |
|--------------|------------|------|
|              | A          | B    |
| ACEC800403A* | 14"        | 12½" |
| ACEC800603A* | 14"        | 12½" |
| ACEC800603B* | 17½"       | 16"  |
| ACEC800804B* | 17½"       | 16"  |
| ACEC800805C* | 21"        | 19½" |
| ACEC801005C* | 21"        | 19½" |

**MINIMUM CLEARANCES TO COMBUSTIBLE MATERIALS**

| SIDES | REAR | FRONT <sup>1</sup> | VENT <sup>2</sup> |   | TOP |
|-------|------|--------------------|-------------------|---|-----|
|       |      |                    | SW                | B |     |
| 1     | 0    | 3                  | 6                 | 1 | 1   |

Approved for line contact in the horizontal position.

<sup>1</sup> 24" clearance for serviceability recommended.

<sup>2</sup> Single Wall Vent (SW) to be used only as a connector. Refer to the venting tables outlined in the Installation Manual for additional venting requirements.

**ACCESSORIES**

| MODEL        | DESCRIPTION                           |
|--------------|---------------------------------------|
| LPM-08       | LP Conversion Kit (Springs & Orifice) |
| AM11-1425-FA | Deep Pleated Media Air Cleaner        |
| AM11-1625-FB | Deep Pleated Media Air Cleaner        |
| AM11-2025-FC | Deep Pleated Media Air Cleaner        |
| AM11-2525-FD | Deep Pleated Media Air Cleaner        |

| PCBBF139                         |             | *CEC800403A* - COOLING |      |      |      |      |      |      |      |
|----------------------------------|-------------|------------------------|------|------|------|------|------|------|------|
| DIP SWITCHES<br>S1-1, S1-2, S1-3 | STATIC      | 0.1                    | 0.2  | 0.3  | 0.4  | 0.5  | 0.6  | 0.7  | 0.8  |
|                                  | T STAT CALL | CFM                    | CFM  | CFM  | CFM  | CFM  | CFM  | CFM  | CFM  |
| OFF OFF OFF*                     | Ylo         | 785                    | 754  | 736  | 690  | 650  | 604  | 565  | 527  |
|                                  | Y           | 1348                   | 1294 | 1261 | 1250 | 1229 | 1233 | 1205 | 1182 |
| ON OFF OFF                       | Ylo         | 663                    | 647  | 597  | 551  | 501  | 458  | 408  | 355  |
|                                  | Y           | 785                    | 754  | 736  | 690  | 650  | 604  | 565  | 527  |
| ON ON OFF                        | Ylo         | 663                    | 647  | 597  | 551  | 501  | 458  | 408  | 355  |
|                                  | Y           | 1348                   | 1294 | 1261 | 1250 | 1229 | 1233 | 1205 | 1182 |
| OFF ON OFF                       | Ylo         | 785                    | 754  | 736  | 690  | 650  | 604  | 565  | 527  |
|                                  | Y           | 591                    | 568  | 518  | 463  | 411  | 355  | 300  | 243  |
| OFF OFF ON                       | Ylo         | 785                    | 754  | 736  | 690  | 650  | 604  | 565  | 527  |
|                                  | Y           | 1104                   | 1058 | 1020 | 1022 | 1013 | 981  | 952  | 918  |
| OFF ON ON                        | Ylo         | 663                    | 647  | 597  | 551  | 501  | 458  | 408  | 355  |
|                                  | Y           | 591                    | 568  | 518  | 463  | 411  | 355  | 300  | 243  |
| ON OFF ON                        | Ylo         | 1104                   | 1058 | 1020 | 1022 | 1013 | 981  | 952  | 918  |
|                                  | Y           | 1348                   | 1294 | 1261 | 1250 | 1229 | 1233 | 1205 | 1182 |
| ON ON ON                         | Ylo         | 1104                   | 1058 | 1020 | 1022 | 1013 | 981  | 952  | 918  |
|                                  | Y           | 663                    | 647  | 597  | 551  | 501  | 458  | 408  | 355  |

| PCBBF139                       |             | *CEC800403A* - CONTINOUS FAN |      |      |      |      |      |      |      |
|--------------------------------|-------------|------------------------------|------|------|------|------|------|------|------|
| DIP SWITCHES<br>S2-2 S2-3 S2-4 | STATIC      | 0.1                          | 0.2  | 0.3  | 0.4  | 0.5  | 0.6  | 0.7  | 0.8  |
|                                | T STAT CALL | CFM                          | CFM  | CFM  | CFM  | CFM  | CFM  | CFM  | CFM  |
| OFF OFF OFF                    | G           | 591                          | 568  | 518  | 463  | 411  | 355  | 300  | 243  |
| ON OFF OFF                     | G           | 1104                         | 1058 | 1020 | 1022 | 1013 | 981  | 952  | 918  |
| ON ON OFF                      | G           | 663                          | 647  | 597  | 551  | 501  | 458  | 408  | 355  |
| OFF ON OFF                     | G           | 785                          | 754  | 736  | 690  | 650  | 604  | 565  | 527  |
| OFF OFF ON                     | G           | 1348                         | 1294 | 1261 | 1250 | 1229 | 1233 | 1205 | 1182 |
| OFF ON ON                      | G           | 591                          | 568  | 518  | 463  | 411  | 355  | 300  | 243  |
| ON OFF ON                      | G           | 591                          | 568  | 518  | 463  | 411  | 355  | 300  | 243  |
| ON ON ON                       | G           | 591                          | 568  | 518  | 463  | 411  | 355  | 300  | 243  |

| PCBBF139                  |             | *CEC800403A* - HEATING |      |      |      |      |      |      |      |      |      |      |      |      |
|---------------------------|-------------|------------------------|------|------|------|------|------|------|------|------|------|------|------|------|
| DIP SWITCHES<br>S1-4 S2-1 | STATIC      | 0.1                    |      | 0.2  |      | 0.3  |      | 0.4  |      | 0.5  |      | 0.6  | 0.7  | 0.8  |
|                           | T STAT CALL | CFM                    | RISE | CFM  | RISE | CFM  | RISE | CFM  | RISE | CFM  | RISE | CFM  | CFM  | CFM  |
| OFF OFF*                  | W1          | 591                    | 35   | 568  | 37   | 518  | 40   | 463  | 45   | 411  | N/A  | 355  | 300  | 243  |
|                           | W2          | 1104                   | 27   | 1058 | 28   | 1020 | 29   | 1022 | 29   | 1013 | 29   | 981  | 952  | 918  |
| ON OFF                    | W1          | 663                    | 31   | 647  | 32   | 597  | 35   | 551  | 38   | 501  | 41   | 458  | 408  | 355  |
|                           | W2          | 1104                   | 27   | 1058 | 28   | 1020 | 29   | 1022 | 29   | 1013 | 29   | 981  | 952  | 918  |
| ON ON                     | W1          | 663                    | 31   | 647  | 32   | 597  | 35   | 551  | 38   | 501  | 41   | 458  | 408  | 355  |
|                           | W2          | 785                    | 38   | 754  | 39   | 736  | 40   | 690  | 43   | 650  | N/A  | 604  | 565  | 527  |
| OFF ON                    | W1          | 785                    | 26   | 754  | 28   | 736  | 28   | 690  | 30   | 650  | 32   | 604  | 565  | 527  |
|                           | W2          | 1348                   | 22   | 1294 | 23   | 1261 | 23   | 1250 | 24   | 1229 | 24   | 1233 | 1205 | 1182 |

\*DEFAULT  
 \*\*NOT RECOMMENDED

| PCBBF139                         |             | *CEC800603A* - COOLING |      |      |      |      |      |      |      |
|----------------------------------|-------------|------------------------|------|------|------|------|------|------|------|
| DIP SWITCHES<br>S1-1, S1-2, S1-3 | STATIC      | 0.1                    | 0.2  | 0.3  | 0.4  | 0.5  | 0.6  | 0.7  | 0.8  |
|                                  | T STAT CALL | CFM                    | CFM  | CFM  | CFM  | CFM  | CFM  | CFM  | CFM  |
| OFF OFF OFF*                     | Ylo         | 1160                   | 1102 | 1055 | 1017 | 970  | 930  | 891  | 847  |
|                                  | Y           | 1411                   | 1356 | 1313 | 1272 | 1235 | 1198 | 1162 | 1127 |
| ON OFF OFF                       | Ylo         | 656                    | 589  | 532  | 465  | 402  | 348  | 271  | 219  |
|                                  | Y           | 1160                   | 1102 | 1055 | 1017 | 970  | 930  | 891  | 847  |
| ON ON OFF                        | Ylo         | 656                    | 589  | 532  | 465  | 402  | 348  | 271  | 219  |
|                                  | Y           | 1411                   | 1356 | 1313 | 1272 | 1235 | 1198 | 1162 | 1127 |
| OFF ON OFF                       | Ylo         | 1160                   | 1102 | 1055 | 1017 | 970  | 930  | 891  | 847  |
|                                  | Y           | 716                    | 647  | 592  | 541  | 478  | 420  | 368  | 296  |
| OFF OFF ON                       | Ylo         | 1160                   | 1102 | 1055 | 1017 | 970  | 930  | 891  | 847  |
|                                  | Y           | 1054                   | 1002 | 951  | 906  | 861  | 820  | 797  | 754  |
| OFF ON ON                        | Ylo         | 656                    | 589  | 532  | 465  | 402  | 348  | 271  | 219  |
|                                  | Y           | 716                    | 647  | 592  | 541  | 478  | 420  | 368  | 296  |
| ON OFF ON                        | Ylo         | 1054                   | 1002 | 951  | 906  | 861  | 820  | 797  | 754  |
|                                  | Y           | 1411                   | 1356 | 1313 | 1272 | 1235 | 1198 | 1162 | 1127 |
| ON ON ON                         | Ylo         | 1054                   | 1002 | 951  | 906  | 861  | 820  | 797  | 754  |
|                                  | Y           | 656                    | 589  | 532  | 465  | 402  | 348  | 271  | 219  |

| PCBBF139                       |             | *CEC800603A* - CONTINOUS FAN |      |      |      |      |      |      |      |
|--------------------------------|-------------|------------------------------|------|------|------|------|------|------|------|
| DIP SWITCHES<br>S2-2 S2-3 S2-4 | STATIC      | 0.1                          | 0.2  | 0.3  | 0.4  | 0.5  | 0.6  | 0.7  | 0.8  |
|                                | T STAT CALL | CFM                          | CFM  | CFM  | CFM  | CFM  | CFM  | CFM  | CFM  |
| OFF OFF OFF                    | G           | 716                          | 647  | 592  | 541  | 478  | 420  | 368  | 296  |
| ON OFF OFF                     | G           | 1054                         | 1002 | 951  | 906  | 861  | 820  | 797  | 754  |
| ON ON OFF                      | G           | 656                          | 589  | 532  | 465  | 402  | 348  | 271  | 219  |
| OFF ON OFF                     | G           | 1160                         | 1102 | 1055 | 1017 | 970  | 930  | 891  | 847  |
| OFF OFF ON                     | G           | 1411                         | 1356 | 1313 | 1272 | 1235 | 1198 | 1162 | 1127 |
| OFF ON ON                      | G           | 716                          | 647  | 592  | 541  | 478  | 420  | 368  | 296  |
| ON OFF ON                      | G           | 716                          | 647  | 592  | 541  | 478  | 420  | 368  | 296  |
| ON ON ON                       | G           | 716                          | 647  | 592  | 541  | 478  | 420  | 368  | 296  |

| PCBBF139                  |             | *CEC800603A* - HEATING |      |      |      |      |      |      |      |      |      |      |      |      |
|---------------------------|-------------|------------------------|------|------|------|------|------|------|------|------|------|------|------|------|
| DIP SWITCHES<br>S1-4 S2-1 | STATIC      | 0.1                    |      | 0.2  |      | 0.3  |      | 0.4  |      | 0.5  |      | 0.6  | 0.7  | 0.8  |
|                           | T STAT CALL | CFM                    | RISE | CFM  | RISE | CFM  | RISE | CFM  | RISE | CFM  | RISE | CFM  | CFM  | CFM  |
| OFF OFF*                  | W1          | 716                    | 43   | 647  | 48   | 592  | 53   | 541  | 58   | 478  | N/A  | 420  | 368  | 296  |
|                           | W2          | 1054                   | 42   | 1002 | 44   | 951  | 47   | 906  | 49   | 861  | 52   | 820  | 797  | 754  |
| ON OFF                    | W1          | 656                    | 47   | 589  | 53   | 532  | 58   | 465  | N/A  | 402  | N/A  | 348  | 271  | 219  |
|                           | W2          | 1054                   | 42   | 1002 | 44   | 951  | 47   | 906  | 49   | 861  | 52   | 820  | 797  | 754  |
| ON ON                     | W1          | 656                    | 47   | 589  | 53   | 532  | 58   | 465  | N/A  | 402  | N/A  | 348  | 271  | 219  |
|                           | W2          | 1160                   | 38   | 1102 | 40   | 1055 | 42   | 1017 | 44   | 970  | 46   | 930  | 891  | 847  |
| OFF ON**                  | W1          | 1160                   | N/A  | 1102 | N/A  | 1055 | N/A  | 1017 | N/A  | 970  | N/A  | 930  | 891  | 847  |
|                           | W2          | 1411                   | N/A  | 1356 | N/A  | 1313 | N/A  | 1272 | N/A  | 1235 | N/A  | 1198 | 1162 | 1127 |

\*DEFAULT

\*\*NOT RECOMMENDED



| PCBBF139                         |             | *CEC800603B* - COOLING |      |      |      |      |      |      |     |
|----------------------------------|-------------|------------------------|------|------|------|------|------|------|-----|
| DIP SWITCHES<br>S1-1, S1-2, S1-3 | STATIC      | 0.1                    | 0.2  | 0.3  | 0.4  | 0.5  | 0.6  | 0.7  | 0.8 |
|                                  | T STAT CALL | CFM                    | CFM  | CFM  | CFM  | CFM  | CFM  | CFM  | CFM |
| OFF OFF OFF*                     | Ylo         | 1223                   | 1144 | 1081 | 995  | 918  | 839  | 798  | 738 |
|                                  | Y           | 1395                   | 1332 | 1272 | 1207 | 1136 | 1074 | 1007 | 948 |
| ON OFF OFF                       | Ylo         | 1032                   | 800  | 578  | 487  | 387  | 301  | 235  | 151 |
|                                  | Y           | 1223                   | 1144 | 1081 | 995  | 918  | 839  | 798  | 738 |
| ON ON OFF                        | Ylo         | 1032                   | 800  | 578  | 487  | 387  | 301  | 235  | 151 |
|                                  | Y           | 1395                   | 1332 | 1272 | 1207 | 1136 | 1074 | 1007 | 948 |
| OFF ON OFF                       | Ylo         | 1223                   | 1144 | 1081 | 995  | 918  | 839  | 798  | 738 |
|                                  | Y           | 1025                   | 850  | 754  | 670  | 594  | 520  | 443  | 366 |
| OFF OFF ON                       | Ylo         | 1223                   | 1144 | 1081 | 995  | 918  | 839  | 798  | 738 |
|                                  | Y           | 1258                   | 1179 | 1115 | 1030 | 954  | 885  | 814  | 776 |
| OFF ON ON                        | Ylo         | 1032                   | 800  | 578  | 487  | 387  | 301  | 235  | 151 |
|                                  | Y           | 1025                   | 850  | 754  | 670  | 594  | 520  | 443  | 366 |
| ON OFF ON                        | Ylo         | 1258                   | 1179 | 1115 | 1030 | 954  | 885  | 814  | 776 |
|                                  | Y           | 1395                   | 1332 | 1272 | 1207 | 1136 | 1074 | 1007 | 948 |
| ON ON ON                         | Ylo         | 1258                   | 1179 | 1115 | 1030 | 954  | 885  | 814  | 776 |
|                                  | Y           | 1032                   | 800  | 578  | 487  | 387  | 301  | 235  | 151 |

| PCBBF139                       |             | *CEC800603B* - CONTINUOUS FAN |      |      |      |      |      |      |     |
|--------------------------------|-------------|-------------------------------|------|------|------|------|------|------|-----|
| DIP SWITCHES<br>S2-2 S2-3 S2-4 | STATIC      | 0.1                           | 0.2  | 0.3  | 0.4  | 0.5  | 0.6  | 0.7  | 0.8 |
|                                | T STAT CALL | CFM                           | CFM  | CFM  | CFM  | CFM  | CFM  | CFM  | CFM |
| OFF OFF OFF                    | G           | 1025                          | 850  | 754  | 670  | 594  | 520  | 443  | 366 |
| ON OFF OFF                     | G           | 1258                          | 1179 | 1115 | 1030 | 954  | 885  | 814  | 776 |
| ON ON OFF                      | G           | 1032                          | 800  | 578  | 487  | 387  | 301  | 235  | 151 |
| OFF ON OFF                     | G           | 1223                          | 1144 | 1081 | 995  | 918  | 839  | 798  | 738 |
| OFF OFF ON                     | G           | 1395                          | 1332 | 1272 | 1207 | 1136 | 1074 | 1007 | 948 |
| OFF ON ON                      | G           | 1025                          | 850  | 754  | 670  | 594  | 520  | 443  | 366 |
| ON OFF ON                      | G           | 1025                          | 850  | 754  | 670  | 594  | 520  | 443  | 366 |
| ON ON ON                       | G           | 1025                          | 850  | 754  | 670  | 594  | 520  | 443  | 366 |

| PCBBF139                  |             | *CEC800603B* - HEATING |      |      |      |      |      |      |      |      |      |      |      |     |
|---------------------------|-------------|------------------------|------|------|------|------|------|------|------|------|------|------|------|-----|
| DIP SWITCHES<br>S1-4 S2-1 | STATIC      | 0.1                    |      | 0.2  |      | 0.3  |      | 0.4  |      | 0.5  |      | 0.6  | 0.7  | 0.8 |
|                           | T STAT CALL | CFM                    | RISE | CFM  | RISE | CFM  | RISE | CFM  | RISE | CFM  | RISE | CFM  | CFM  | CFM |
| OFF OFF*                  | W1          | 1025                   | 30   | 850  | 37   | 754  | 41   | 670  | 46   | 594  | 52   | 520  | 443  | 366 |
|                           | W2          | 1258                   | 35   | 1179 | 38   | 1115 | 40   | 1030 | 43   | 954  | 47   | 885  | 814  | 776 |
| ON OFF                    | W1          | 1032                   | 30   | 800  | 39   | 578  | 54   | 487  | N/A  | 387  | N/A  | 301  | 235  | 151 |
|                           | W2          | 1258                   | 35   | 1179 | 38   | 1115 | 40   | 1030 | 43   | 954  | 47   | 885  | 814  | 776 |
| ON ON                     | W1          | 1032                   | 30   | 800  | 39   | 578  | 54   | 487  | N/A  | 387  | N/A  | 301  | 235  | 151 |
|                           | W2          | 1223                   | 36   | 1144 | 39   | 1081 | 41   | 995  | 45   | 918  | 48   | 839  | 798  | 738 |
| OFF ON**                  | W1          | 1223                   | N/A  | 1144 | N/A  | 1081 | N/A  | 995  | N/A  | 918  | N/A  | 839  | 798  | 738 |
|                           | W2          | 1395                   | N/A  | 1332 | N/A  | 1272 | N/A  | 1207 | N/A  | 1136 | N/A  | 1074 | 1007 | 948 |

\*DEFAULT

\*\*NOT RECOMMENDED

| PCBBF139                         |             | *CEC800804B* - COOLING |      |      |      |      |      |      |      |
|----------------------------------|-------------|------------------------|------|------|------|------|------|------|------|
| DIP SWITCHES<br>S1-1, S1-2, S1-3 | STATIC      | 0.1                    | 0.2  | 0.3  | 0.4  | 0.5  | 0.6  | 0.7  | 0.8  |
|                                  | T STAT CALL | CFM                    | CFM  | CFM  | CFM  | CFM  | CFM  | CFM  | CFM  |
| OFF OFF OFF*                     | Ylo         | 1596                   | 1553 | 1512 | 1491 | 1450 | 1411 | 1388 | 1347 |
|                                  | Y           | 1757                   | 1713 | 1691 | 1664 | 1625 | 1588 | 1552 | 1522 |
| ON OFF OFF                       | Ylo         | 784                    | 716  | 645  | 583  | 516  | 405  | 334  | 282  |
|                                  | Y           | 1596                   | 1553 | 1512 | 1491 | 1450 | 1411 | 1388 | 1347 |
| ON ON OFF                        | Ylo         | 784                    | 716  | 645  | 583  | 516  | 405  | 334  | 282  |
|                                  | Y           | 1757                   | 1713 | 1691 | 1664 | 1625 | 1588 | 1552 | 1522 |
| OFF ON OFF                       | Ylo         | 1596                   | 1553 | 1512 | 1491 | 1450 | 1411 | 1388 | 1347 |
|                                  | Y           | 1040                   | 973  | 936  | 918  | 859  | 805  | 770  | 720  |
| OFF OFF ON                       | Ylo         | 1596                   | 1553 | 1512 | 1491 | 1450 | 1411 | 1388 | 1347 |
|                                  | Y           | 1401                   | 1366 | 1320 | 1278 | 1236 | 1194 | 1153 | 1112 |
| OFF ON ON                        | Ylo         | 784                    | 716  | 645  | 583  | 516  | 405  | 334  | 282  |
|                                  | Y           | 1040                   | 973  | 936  | 918  | 859  | 805  | 770  | 720  |
| ON OFF ON                        | Ylo         | 1401                   | 1366 | 1320 | 1278 | 1236 | 1194 | 1153 | 1112 |
|                                  | Y           | 1757                   | 1713 | 1691 | 1664 | 1625 | 1588 | 1552 | 1522 |
| ON ON ON                         | Ylo         | 1401                   | 1366 | 1320 | 1278 | 1236 | 1194 | 1153 | 1112 |
|                                  | Y           | 784                    | 716  | 645  | 583  | 516  | 405  | 334  | 282  |

| PCBBF139                       |             | *CEC800804B* - CONTINOUS FAN |      |      |      |      |      |      |      |
|--------------------------------|-------------|------------------------------|------|------|------|------|------|------|------|
| DIP SWITCHES<br>S2-2 S2-3 S2-4 | STATIC      | 0.1                          | 0.2  | 0.3  | 0.4  | 0.5  | 0.6  | 0.7  | 0.8  |
|                                | T STAT CALL | CFM                          | CFM  | CFM  | CFM  | CFM  | CFM  | CFM  | CFM  |
| OFF OFF OFF                    | G           | 1040                         | 973  | 936  | 918  | 859  | 805  | 770  | 720  |
| ON OFF OFF                     | G           | 1401                         | 1366 | 1320 | 1278 | 1236 | 1194 | 1153 | 1112 |
| ON ON OFF                      | G           | 784                          | 716  | 645  | 583  | 516  | 405  | 334  | 282  |
| OFF ON OFF                     | G           | 1596                         | 1553 | 1512 | 1491 | 1450 | 1411 | 1388 | 1347 |
| OFF OFF ON                     | G           | 1757                         | 1713 | 1691 | 1664 | 1625 | 1588 | 1552 | 1522 |
| OFF ON ON                      | G           | 1040                         | 973  | 936  | 918  | 859  | 805  | 770  | 720  |
| ON OFF ON                      | G           | 1040                         | 973  | 936  | 918  | 859  | 805  | 770  | 720  |
| ON ON ON                       | G           | 1040                         | 973  | 936  | 918  | 859  | 805  | 770  | 720  |

| PCBBF139                  |             | *CEC800804B* - HEATING |      |      |      |      |      |      |      |      |      |      |      |      |
|---------------------------|-------------|------------------------|------|------|------|------|------|------|------|------|------|------|------|------|
| DIP SWITCHES<br>S1-4 S2-1 | STATIC      | 0.1                    |      | 0.2  |      | 0.3  |      | 0.4  |      | 0.5  |      | 0.6  | 0.7  | 0.8  |
|                           | T STAT CALL | CFM                    | RISE | CFM  | RISE | CFM  | RISE | CFM  | RISE | CFM  | RISE | CFM  | CFM  | CFM  |
| OFF OFF*                  | W1          | 1040                   | 40   | 973  | 43   | 936  | 44   | 918  | 45   | 859  | 48   | 805  | 770  | 720  |
|                           | W2          | 1401                   | 42   | 1366 | 43   | 1320 | 45   | 1278 | 46   | 1236 | 48   | 1194 | 1153 | 1112 |
| ON OFF                    | W1          | 784                    | 53   | 716  | 58   | 645  | N/A  | 583  | N/A  | 516  | N/A  | 405  | 334  | 282  |
|                           | W2          | 1401                   | 42   | 1366 | 43   | 1320 | 45   | 1278 | 46   | 1236 | 48   | 1194 | 1153 | 1112 |
| ON ON                     | W1          | 784                    | 53   | 716  | 58   | 645  | N/A  | 583  | N/A  | 516  | N/A  | 405  | 334  | 282  |
|                           | W2          | 1596                   | 37   | 1553 | 38   | 1512 | 39   | 1491 | 40   | 1450 | 41   | 1411 | 1388 | 1347 |
| OFF ON**                  | W1          | 1596                   | N/A  | 1553 | N/A  | 1512 | N/A  | 1491 | N/A  | 1450 | N/A  | 1411 | 1388 | 1347 |
|                           | W2          | 1757                   | N/A  | 1713 | N/A  | 1691 | N/A  | 1664 | N/A  | 1625 | N/A  | 1588 | 1552 | 1522 |

\*DEFAULT

\*\*NOT RECOMMENDED

| PCBBF139                         |             | *CEC800805C* - COOLING |      |      |      |      |      |      |      |
|----------------------------------|-------------|------------------------|------|------|------|------|------|------|------|
| DIP SWITCHES<br>S1-1, S1-2, S1-3 | STATIC      | 0.1                    | 0.2  | 0.3  | 0.4  | 0.5  | 0.6  | 0.7  | 0.8  |
|                                  | T STAT CALL | CFM                    | CFM  | CFM  | CFM  | CFM  | CFM  | CFM  | CFM  |
| OFF OFF OFF*                     | Ylo         | 1782                   | 1744 | 1715 | 1700 | 1660 | 1619 | 1579 | 1510 |
|                                  | Y           | 2145                   | 2089 | 2058 | 2036 | 2020 | 2000 | 1971 | 1935 |
| ON OFF OFF                       | Ylo         | 1171                   | 884  | 667  | 576  | 495  | 399  | 338  | 302  |
|                                  | Y           | 1782                   | 1744 | 1715 | 1700 | 1660 | 1619 | 1579 | 1510 |
| ON ON OFF                        | Ylo         | 1171                   | 884  | 667  | 576  | 495  | 399  | 338  | 302  |
|                                  | Y           | 2145                   | 2089 | 2058 | 2036 | 2020 | 2000 | 1971 | 1935 |
| OFF ON OFF                       | Ylo         | 1782                   | 1744 | 1715 | 1700 | 1660 | 1619 | 1579 | 1510 |
|                                  | Y           | 1175                   | 1098 | 1024 | 947  | 883  | 823  | 764  | 703  |
| OFF OFF ON                       | Ylo         | 1782                   | 1744 | 1715 | 1700 | 1660 | 1619 | 1579 | 1510 |
|                                  | Y           | 1547                   | 1506 | 1474 | 1442 | 1390 | 1332 | 1273 | 1222 |
| OFF ON ON                        | Ylo         | 1171                   | 884  | 667  | 576  | 495  | 399  | 338  | 302  |
|                                  | Y           | 1175                   | 1098 | 1024 | 947  | 883  | 823  | 764  | 703  |
| ON OFF ON                        | Ylo         | 1547                   | 1506 | 1474 | 1442 | 1390 | 1332 | 1273 | 1222 |
|                                  | Y           | 2145                   | 2089 | 2058 | 2036 | 2020 | 2000 | 1971 | 1935 |
| ON ON ON                         | Ylo         | 1547                   | 1506 | 1474 | 1442 | 1390 | 1332 | 1273 | 1222 |
|                                  | Y           | 1171                   | 884  | 667  | 576  | 495  | 399  | 338  | 302  |

| PCBBF139                       |             | *CEC800805C* - CONTINOUS FAN |      |      |      |      |      |      |      |
|--------------------------------|-------------|------------------------------|------|------|------|------|------|------|------|
| DIP SWITCHES<br>S2-2 S2-3 S2-4 | STATIC      | 0.1                          | 0.2  | 0.3  | 0.4  | 0.5  | 0.6  | 0.7  | 0.8  |
|                                | T STAT CALL | CFM                          | CFM  | CFM  | CFM  | CFM  | CFM  | CFM  | CFM  |
| OFF OFF OFF                    | G           | 1175                         | 1098 | 1024 | 947  | 883  | 823  | 764  | 703  |
| ON OFF OFF                     | G           | 1547                         | 1506 | 1474 | 1442 | 1390 | 1332 | 1273 | 1222 |
| ON ON OFF                      | G           | 1171                         | 884  | 667  | 576  | 495  | 399  | 338  | 302  |
| OFF ON OFF                     | G           | 1782                         | 1744 | 1715 | 1700 | 1660 | 1619 | 1579 | 1510 |
| OFF OFF ON                     | G           | 2145                         | 2089 | 2058 | 2036 | 2020 | 2000 | 1971 | 1935 |
| OFF ON ON                      | G           | 1175                         | 1098 | 1024 | 947  | 883  | 823  | 764  | 703  |
| ON OFF ON                      | G           | 1175                         | 1098 | 1024 | 947  | 883  | 823  | 764  | 703  |
| ON ON ON                       | G           | 1175                         | 1098 | 1024 | 947  | 883  | 823  | 764  | 703  |

| PCBBF139                  |             | *CEC800805C* - HEATING |      |      |      |      |      |      |      |      |      |      |      |      |
|---------------------------|-------------|------------------------|------|------|------|------|------|------|------|------|------|------|------|------|
| DIP SWITCHES<br>S1-4 S2-1 | STATIC      | 0.1                    |      | 0.2  |      | 0.3  |      | 0.4  |      | 0.5  |      | 0.6  | 0.7  | 0.8  |
|                           | T STAT CALL | CFM                    | RISE | CFM  | RISE | CFM  | RISE | CFM  | RISE | CFM  | RISE | CFM  | CFM  | CFM  |
| OFF OFF*                  | W1          | 1175                   | 35   | 1098 | 38   | 1024 | 41   | 947  | 44   | 883  | 47   | 823  | 764  | 703  |
|                           | W2          | 1547                   | 38   | 1506 | 39   | 1474 | 40   | 1442 | 41   | 1390 | 43   | 1332 | 1273 | 1222 |
| ON OFF                    | W1          | 1171                   | 35   | 884  | 47   | 667  | N/A  | 576  | N/A  | 495  | N/A  | 399  | 338  | 302  |
|                           | W2          | 1547                   | 38   | 1506 | 39   | 1474 | 40   | 1442 | 41   | 1390 | 43   | 1332 | 1273 | 1222 |
| ON ON**                   | W1          | 1171                   | N/A  | 884  | N/A  | 667  | N/A  | 576  | N/A  | 495  | N/A  | 399  | 338  | 302  |
|                           | W2          | 1782                   | N/A  | 1744 | N/A  | 1715 | N/A  | 1700 | N/A  | 1660 | N/A  | 1619 | 1579 | 1510 |
| OFF ON**                  | W1          | 1782                   | N/A  | 1744 | N/A  | 1715 | N/A  | 1700 | N/A  | 1660 | N/A  | 1619 | 1579 | 1510 |
|                           | W2          | 2145                   | N/A  | 2089 | N/A  | 2058 | N/A  | 2036 | N/A  | 2020 | N/A  | 2000 | 1971 | 1935 |

\*DEFAULT

\*\*NOT RECOMMENDED

**\*\*EC801005C\* AIRFLOW DATA (CONT.)**

| PCBBF139                         |             | **EC801005C* - COOLING |      |      |      |      |      |      |      |
|----------------------------------|-------------|------------------------|------|------|------|------|------|------|------|
| DIP SWITCHES<br>S1-1, S1-2, S1-3 | STATIC      | 0.1                    | 0.2  | 0.3  | 0.4  | 0.5  | 0.6  | 0.7  | 0.8  |
|                                  | T STAT CALL | CFM                    | CFM  | CFM  | CFM  | CFM  | CFM  | CFM  | CFM  |
| OFF OFF OFF*                     | Ylo         | 1820                   | 1769 | 1726 | 1685 | 1642 | 1603 | 1557 | 1521 |
|                                  | Y           | 2235                   | 2185 | 2139 | 2108 | 2076 | 2032 | 2000 | 1964 |
| ON OFF OFF                       | Ylo         | 803                    | 719  | 631  | 540  | 471  | 337  | 298  | 265  |
|                                  | Y           | 1820                   | 1769 | 1726 | 1685 | 1642 | 1603 | 1557 | 1521 |
| ON ON OFF                        | Ylo         | 803                    | 719  | 631  | 540  | 471  | 337  | 298  | 265  |
|                                  | Y           | 2235                   | 2185 | 2139 | 2108 | 2076 | 2032 | 2000 | 1964 |
| OFF ON OFF                       | Ylo         | 1820                   | 1769 | 1726 | 1685 | 1642 | 1603 | 1557 | 1521 |
|                                  | Y           | 1626                   | 1574 | 1524 | 1479 | 1433 | 1410 | 1400 | 1358 |
| OFF OFF ON                       | Ylo         | 1820                   | 1769 | 1726 | 1685 | 1642 | 1603 | 1557 | 1521 |
|                                  | Y           | 2169                   | 2116 | 2070 | 2038 | 2003 | 1970 | 1933 | 1897 |
| OFF ON ON                        | Ylo         | 803                    | 719  | 631  | 540  | 471  | 337  | 298  | 265  |
|                                  | Y           | 1626                   | 1574 | 1524 | 1479 | 1433 | 1410 | 1400 | 1358 |
| ON OFF ON                        | Ylo         | 2169                   | 2116 | 2070 | 2038 | 2003 | 1970 | 1933 | 1897 |
|                                  | Y           | 2235                   | 2185 | 2139 | 2108 | 2076 | 2032 | 2000 | 1964 |
| ON ON ON                         | Ylo         | 2169                   | 2116 | 2070 | 2038 | 2003 | 1970 | 1933 | 1897 |
|                                  | Y           | 803                    | 719  | 631  | 540  | 471  | 337  | 298  | 265  |

| PCBBF139                       |             | **EC801005C* - CONTINOUS FAN |      |      |      |      |      |      |      |
|--------------------------------|-------------|------------------------------|------|------|------|------|------|------|------|
| DIP SWITCHES<br>S2-2 S2-3 S2-4 | STATIC      | 0.1                          | 0.2  | 0.3  | 0.4  | 0.5  | 0.6  | 0.7  | 0.8  |
|                                | T STAT CALL | CFM                          | CFM  | CFM  | CFM  | CFM  | CFM  | CFM  | CFM  |
| OFF OFF OFF                    | G           | 1626                         | 1574 | 1524 | 1479 | 1433 | 1410 | 1400 | 1358 |
| ON OFF OFF                     | G           | 2169                         | 2116 | 2070 | 2038 | 2003 | 1970 | 1933 | 1897 |
| ON ON OFF                      | G           | 803                          | 719  | 631  | 540  | 471  | 337  | 298  | 265  |
| OFF ON OFF                     | G           | 1820                         | 1769 | 1726 | 1685 | 1642 | 1603 | 1557 | 1521 |
| OFF OFF ON                     | G           | 2235                         | 2185 | 2139 | 2108 | 2076 | 2032 | 2000 | 1964 |
| OFF ON ON                      | G           | 1626                         | 1574 | 1524 | 1479 | 1433 | 1410 | 1400 | 1358 |
| ON OFF ON                      | G           | 1626                         | 1574 | 1524 | 1479 | 1433 | 1410 | 1400 | 1358 |
| ON ON ON                       | G           | 1626                         | 1574 | 1524 | 1479 | 1433 | 1410 | 1400 | 1358 |

| PCBBF139                  |             | **EC801005C* - HEATING |      |      |      |      |      |      |      |      |      |      |      |      |
|---------------------------|-------------|------------------------|------|------|------|------|------|------|------|------|------|------|------|------|
| DIP SWITCHES<br>S1-4 S2-1 | STATIC      | 0.1                    |      | 0.2  |      | 0.3  |      | 0.4  |      | 0.5  |      | 0.6  | 0.7  | 0.8  |
|                           | T STAT CALL | CFM                    | RISE | CFM  | RISE | CFM  | RISE | CFM  | RISE | CFM  | RISE | CFM  | CFM  | CFM  |
| OFF OFF*                  | W1          | 1626                   | 32   | 1574 | 33   | 1524 | 34   | 1479 | 35   | 1433 | 36   | 1410 | 1400 | 1358 |
|                           | W2          | 2169                   | 34   | 2116 | 35   | 2070 | 36   | 2038 | 36   | 2003 | 37   | 1970 | 1933 | 1897 |
| ON OFF                    | W1          | 803                    | N/A  | 719  | N/A  | 631  | N/A  | 540  | N/A  | 471  | N/A  | 337  | 298  | 265  |
|                           | W2          | 2169                   | 34   | 2116 | 35   | 2070 | 36   | 2038 | 36   | 2003 | 37   | 1970 | 1933 | 1897 |
| ON ON                     | W1          | 803                    | N/A  | 719  | N/A  | 631  | N/A  | 540  | N/A  | 471  | N/A  | 337  | 298  | 265  |
|                           | W2          | 1820                   | 41   | 1769 | 42   | 1726 | 43   | 1685 | 44   | 1642 | 45   | 1603 | 1557 | 1521 |
| OFF ON**                  | W1          | 1820                   | N/A  | 1769 | N/A  | 1726 | N/A  | 1685 | N/A  | 1642 | N/A  | 1603 | 1557 | 1521 |
|                           | W2          | 2235                   | N/A  | 2185 | N/A  | 2139 | N/A  | 2108 | N/A  | 2076 | N/A  | 2032 | 2000 | 1964 |

\*DEFAULT

\*\*NOT RECOMMENDED

| PCBBF139                         |             | *MEC800403A* - COOLING |      |      |      |      |      |      |      |
|----------------------------------|-------------|------------------------|------|------|------|------|------|------|------|
| DIP SWITCHES<br>S1-1, S1-2, S1-3 | STATIC      | 0.1                    | 0.2  | 0.3  | 0.4  | 0.5  | 0.6  | 0.7  | 0.8  |
|                                  | T STAT CALL | CFM                    | CFM  | CFM  | CFM  | CFM  | CFM  | CFM  | CFM  |
| OFF OFF OFF*                     | Ylo         | 1138                   | 1093 | 1057 | 1016 | 981  | 945  | 912  | 876  |
|                                  | Y           | 1367                   | 1321 | 1286 | 1255 | 1223 | 1190 | 1160 | 1133 |
| ON OFF OFF                       | Ylo         | 923                    | 865  | 824  | 802  | 759  | 715  | 674  | 631  |
|                                  | Y           | 1138                   | 1093 | 1057 | 1016 | 981  | 945  | 912  | 876  |
| ON ON OFF                        | Ylo         | 923                    | 865  | 824  | 802  | 759  | 715  | 674  | 631  |
|                                  | Y           | 1367                   | 1321 | 1286 | 1255 | 1223 | 1190 | 1160 | 1133 |
| OFF ON OFF                       | Ylo         | 1138                   | 1093 | 1057 | 1016 | 981  | 945  | 912  | 876  |
|                                  | Y           | 553                    | 496  | 436  | 372  | 308  | 252  | 198  | N/A  |
| OFF OFF ON                       | Ylo         | 1138                   | 1093 | 1057 | 1016 | 981  | 945  | 912  | 876  |
|                                  | Y           | 750                    | 703  | 651  | 600  | 553  | 504  | 456  | 409  |
| OFF ON ON                        | Ylo         | 923                    | 865  | 824  | 802  | 759  | 715  | 674  | 631  |
|                                  | Y           | 553                    | 496  | 436  | 372  | 308  | 252  | 198  | N/A  |
| ON OFF ON                        | Ylo         | 750                    | 703  | 651  | 600  | 553  | 504  | 456  | 409  |
|                                  | Y           | 1367                   | 1321 | 1286 | 1255 | 1223 | 1190 | 1160 | 1133 |
| ON ON ON                         | Ylo         | 750                    | 703  | 651  | 600  | 553  | 504  | 456  | 409  |
|                                  | Y           | 923                    | 865  | 824  | 802  | 759  | 715  | 674  | 631  |

| PCBBF139                       |             | *MEC800403A* - CONTINOUS FAN |      |      |      |      |      |      |      |
|--------------------------------|-------------|------------------------------|------|------|------|------|------|------|------|
| DIP SWITCHES<br>S2-2 S2-3 S2-4 | STATIC      | 0.1                          | 0.2  | 0.3  | 0.4  | 0.5  | 0.6  | 0.7  | 0.8  |
|                                | T STAT CALL | CFM                          | CFM  | CFM  | CFM  | CFM  | CFM  | CFM  | CFM  |
| OFF OFF OFF                    | G           | 553                          | 496  | 436  | 372  | 308  | 252  | 198  | N/A  |
| ON OFF OFF                     | G           | 750                          | 703  | 651  | 600  | 553  | 504  | 456  | 409  |
| ON ON OFF                      | G           | 923                          | 865  | 824  | 802  | 759  | 715  | 674  | 631  |
| OFF ON OFF                     | G           | 1138                         | 1093 | 1057 | 1016 | 981  | 945  | 912  | 876  |
| OFF OFF ON                     | G           | 1367                         | 1321 | 1286 | 1255 | 1223 | 1190 | 1160 | 1133 |
| OFF ON ON                      | G           | 553                          | 496  | 436  | 372  | 308  | 252  | 198  | N/A  |
| ON OFF ON                      | G           | 553                          | 496  | 436  | 372  | 308  | 252  | 198  | N/A  |
| ON ON ON                       | G           | 553                          | 496  | 436  | 372  | 308  | 252  | 198  | N/A  |

| PCBBF139                  |             | *MEC800403A* - HEATING |      |      |      |      |      |      |      |      |      |      |      |      |
|---------------------------|-------------|------------------------|------|------|------|------|------|------|------|------|------|------|------|------|
| DIP SWITCHES<br>S1-4 S2-1 | STATIC      | 0.1                    |      | 0.2  |      | 0.3  |      | 0.4  |      | 0.5  |      | 0.6  | 0.7  | 0.8  |
|                           | T STAT CALL | CFM                    | RISE | CFM  | RISE | CFM  | RISE | CFM  | RISE | CFM  | RISE | CFM  | CFM  | CFM  |
| OFF OFF*                  | W1          | 553                    | 38   | 496  | 42   | 436  | N/A  | 372  | N/A  | 308  | N/A  | 252  | 198  | N/A  |
|                           | W2          | 750                    | 40   | 703  | 42   | 651  | N/A  | 600  | N/A  | 553  | N/A  | 504  | 456  | 409  |
| ON OFF                    | W1          | 923                    | 22   | 865  | 24   | 824  | 25   | 802  | 26   | 759  | 27   | 715  | 674  | 631  |
|                           | W2          | 750                    | 40   | 703  | 42   | 651  | N/A  | 600  | N/A  | 553  | N/A  | 504  | 456  | 409  |
| ON ON                     | W1          | 923                    | 22   | 865  | 24   | 824  | 25   | 802  | 26   | 759  | 27   | 715  | 674  | 631  |
|                           | W2          | 1138                   | 26   | 1093 | 27   | 1057 | 28   | 1016 | 29   | 981  | 30   | 945  | 912  | 876  |
| OFF ON                    | W1          | 1138                   | N/A  | 1093 | N/A  | 1057 | N/A  | 1016 | N/A  | 981  | N/A  | 945  | 912  | 876  |
|                           | W2          | 1367                   | N/A  | 1321 | N/A  | 1286 | N/A  | 1255 | N/A  | 1223 | N/A  | 1190 | 1160 | 1133 |

\*DEFAULT  
\*\*NOT RECOMMENDED

| PCBBF139                         |             | *MEC800603B* - COOLING |      |      |      |      |      |      |      |
|----------------------------------|-------------|------------------------|------|------|------|------|------|------|------|
| DIP SWITCHES<br>S1-1, S1-2, S1-3 | STATIC      | 0.1                    | 0.2  | 0.3  | 0.4  | 0.5  | 0.6  | 0.7  | 0.8  |
|                                  | T STAT CALL | CFM                    | CFM  | CFM  | CFM  | CFM  | CFM  | CFM  | CFM  |
| OFF OFF OFF*                     | Ylo         | 1330                   | 1280 | 1229 | 1187 | 1146 | 1103 | 1061 | 1018 |
|                                  | Y           | 1465                   | 1416 | 1382 | 1340 | 1299 | 1278 | 1257 | 1219 |
| ON OFF OFF                       | Ylo         | 737                    | 661  | 589  | 531  | 456  | 384  | 313  | 252  |
|                                  | Y           | 1330                   | 1280 | 1229 | 1187 | 1146 | 1103 | 1061 | 1018 |
| ON ON OFF                        | Ylo         | 737                    | 661  | 589  | 531  | 456  | 384  | 313  | 252  |
|                                  | Y           | 1465                   | 1416 | 1382 | 1340 | 1299 | 1278 | 1257 | 1219 |
| OFF ON OFF                       | Ylo         | 1330                   | 1280 | 1229 | 1187 | 1146 | 1103 | 1061 | 1018 |
|                                  | Y           | 1155                   | 1100 | 1048 | 1002 | 952  | 907  | 861  | 816  |
| OFF OFF ON                       | Ylo         | 1330                   | 1280 | 1229 | 1187 | 1146 | 1103 | 1061 | 1018 |
|                                  | Y           | 1418                   | 1376 | 1333 | 1288 | 1248 | 1206 | 1163 | 1124 |
| OFF ON ON                        | Ylo         | 737                    | 661  | 589  | 531  | 456  | 384  | 313  | 252  |
|                                  | Y           | 1155                   | 1100 | 1048 | 1002 | 952  | 907  | 861  | 816  |
| ON OFF ON                        | Ylo         | 1418                   | 1376 | 1333 | 1288 | 1248 | 1206 | 1163 | 1124 |
|                                  | Y           | 1465                   | 1416 | 1382 | 1340 | 1299 | 1278 | 1257 | 1219 |
| ON ON ON                         | Ylo         | 1418                   | 1376 | 1333 | 1288 | 1248 | 1206 | 1163 | 1124 |
|                                  | Y           | 737                    | 661  | 589  | 531  | 456  | 384  | 313  | 252  |

| PCBBF139                       |             | *MEC800603B* - CONTINOUS FAN |      |      |      |      |      |      |      |
|--------------------------------|-------------|------------------------------|------|------|------|------|------|------|------|
| DIP SWITCHES<br>S2-2 S2-3 S2-4 | STATIC      | 0.1                          | 0.2  | 0.3  | 0.4  | 0.5  | 0.6  | 0.7  | 0.8  |
|                                | T STAT CALL | CFM                          | CFM  | CFM  | CFM  | CFM  | CFM  | CFM  | CFM  |
| OFF OFF OFF                    | G           | 1155                         | 1100 | 1048 | 1002 | 952  | 907  | 861  | 816  |
| ON OFF OFF                     | G           | 1418                         | 1376 | 1333 | 1288 | 1248 | 1206 | 1163 | 1124 |
| ON ON OFF                      | G           | 737                          | 661  | 589  | 531  | 456  | 384  | 313  | 252  |
| OFF ON OFF                     | G           | 1330                         | 1280 | 1229 | 1187 | 1146 | 1103 | 1061 | 1018 |
| OFF OFF ON                     | G           | 1465                         | 1416 | 1382 | 1340 | 1299 | 1278 | 1257 | 1219 |
| OFF ON ON                      | G           | 1155                         | 1100 | 1048 | 1002 | 952  | 907  | 861  | 816  |
| ON OFF ON                      | G           | 1155                         | 1100 | 1048 | 1002 | 952  | 907  | 861  | 816  |
| ON ON ON                       | G           | 1155                         | 1100 | 1048 | 1002 | 952  | 907  | 861  | 816  |

| PCBBF139                  |             | *MEC800603B* - HEATING |      |      |      |      |      |      |      |      |      |      |      |      |
|---------------------------|-------------|------------------------|------|------|------|------|------|------|------|------|------|------|------|------|
| DIP SWITCHES<br>S1-4 S2-1 | STATIC      | 0.1                    |      | 0.2  |      | 0.3  |      | 0.4  |      | 0.5  |      | 0.6  | 0.7  | 0.8  |
|                           | T STAT CALL | CFM                    | RISE | CFM  | RISE | CFM  | RISE | CFM  | RISE | CFM  | RISE | CFM  | CFM  | CFM  |
| OFF OFF*                  | W1          | 1155                   | 27   | 1100 | 28   | 1048 | 30   | 1002 | 31   | 952  | 33   | 907  | 861  | 816  |
|                           | W2          | 1418                   | 31   | 1376 | 32   | 1333 | 33   | 1288 | 35   | 1248 | 36   | 1206 | 1163 | 1124 |
| ON OFF                    | W1          | 737                    | 42   | 661  | N/A  | 589  | N/A  | 531  | N/A  | 456  | N/A  | 384  | 313  | 252  |
|                           | W2          | 1418                   | 31   | 1376 | 32   | 1333 | 33   | 1288 | 35   | 1248 | 36   | 1206 | 1163 | 1124 |
| ON ON                     | W1          | 737                    | 42   | 661  | N/A  | 589  | N/A  | 531  | N/A  | 456  | N/A  | 384  | 313  | 252  |
|                           | W2          | 1330                   | 33   | 1280 | 35   | 1229 | 36   | 1187 | 37   | 1146 | 39   | 1103 | 1061 | 1018 |
| OFF ON**                  | W1          | 1330                   | N/A  | 1280 | N/A  | 1229 | N/A  | 1187 | N/A  | 1146 | N/A  | 1103 | 1061 | 1018 |
|                           | W2          | 1465                   | N/A  | 1416 | N/A  | 1382 | N/A  | 1340 | N/A  | 1299 | N/A  | 1278 | 1257 | 1219 |

\*DEFAULT

\*\*NOT RECOMMENDED

| PCBBF139                         |             | AMEC800803B* - COOLING |      |      |      |      |      |      |      |
|----------------------------------|-------------|------------------------|------|------|------|------|------|------|------|
| DIP SWITCHES<br>S1-1, S1-2, S1-3 | STATIC      | 0.1                    | 0.2  | 0.3  | 0.4  | 0.5  | 0.6  | 0.7  | 0.8  |
|                                  | T STAT CALL | CFM                    | CFM  | CFM  | CFM  | CFM  | CFM  | CFM  | CFM  |
| OFF OFF OFF*                     | Ylo         | 1160                   | 1107 | 1060 | 1011 | 965  | 920  | 868  | 818  |
|                                  | Y           | 1231                   | 1185 | 1136 | 1093 | 1049 | 1004 | 956  | 908  |
| ON OFF OFF                       | Ylo         | 706                    | 631  | 563  | 486  | 404  | 338  | 280  | 232  |
|                                  | Y           | 1160                   | 1107 | 1060 | 1011 | 965  | 920  | 868  | 818  |
| ON ON OFF                        | Ylo         | 706                    | 631  | 563  | 486  | 404  | 338  | 280  | 232  |
|                                  | Y           | 1231                   | 1185 | 1136 | 1093 | 1049 | 1004 | 956  | 908  |
| OFF ON OFF                       | Ylo         | 1160                   | 1107 | 1060 | 1011 | 965  | 920  | 868  | 818  |
|                                  | Y           | 1133                   | 1009 | 956  | 903  | 856  | 804  | 774  | 722  |
| OFF OFF ON                       | Ylo         | 1160                   | 1107 | 1060 | 1011 | 965  | 920  | 868  | 818  |
|                                  | Y           | 1402                   | 1358 | 1317 | 1274 | 1234 | 1195 | 1154 | 1113 |
| OFF ON ON                        | Ylo         | 706                    | 631  | 563  | 486  | 404  | 338  | 280  | 232  |
|                                  | Y           | 1133                   | 1009 | 956  | 903  | 856  | 804  | 774  | 722  |
| ON OFF ON                        | Ylo         | 1402                   | 1358 | 1317 | 1274 | 1234 | 1195 | 1154 | 1113 |
|                                  | Y           | 1231                   | 1185 | 1136 | 1093 | 1049 | 1004 | 956  | 908  |
| ON ON ON                         | Ylo         | 1402                   | 1358 | 1317 | 1274 | 1234 | 1195 | 1154 | 1113 |
|                                  | Y           | 706                    | 631  | 563  | 486  | 404  | 338  | 280  | 232  |

| PCBBF139                       |             | AMEC800803B* - CONTINOUS FAN |      |      |      |      |      |      |      |
|--------------------------------|-------------|------------------------------|------|------|------|------|------|------|------|
| DIP SWITCHES<br>S2-2 S2-3 S2-4 | STATIC      | 0.1                          | 0.2  | 0.3  | 0.4  | 0.5  | 0.6  | 0.7  | 0.8  |
|                                | T STAT CALL | CFM                          | CFM  | CFM  | CFM  | CFM  | CFM  | CFM  | CFM  |
| OFF OFF OFF                    | G           | 1133                         | 1009 | 956  | 903  | 856  | 804  | 774  | 722  |
| ON OFF OFF                     | G           | 1402                         | 1358 | 1317 | 1274 | 1234 | 1195 | 1154 | 1113 |
| ON ON OFF                      | G           | 706                          | 631  | 563  | 486  | 404  | 338  | 280  | 232  |
| OFF ON OFF                     | G           | 1160                         | 1107 | 1060 | 1011 | 965  | 920  | 868  | 818  |
| OFF OFF ON                     | G           | 1231                         | 1185 | 1136 | 1093 | 1049 | 1004 | 956  | 908  |
| OFF ON ON                      | G           | 1133                         | 1009 | 956  | 903  | 856  | 804  | 774  | 722  |
| ON OFF ON                      | G           | 1133                         | 1009 | 956  | 903  | 856  | 804  | 774  | 722  |
| ON ON ON                       | G           | 1133                         | 1009 | 956  | 903  | 856  | 804  | 774  | 722  |

| PCBBF139                  |             | AMEC800803B* - HEATING |      |      |      |      |      |      |      |      |      |      |      |      |
|---------------------------|-------------|------------------------|------|------|------|------|------|------|------|------|------|------|------|------|
| DIP SWITCHES<br>S1-4 S2-1 | STATIC      | 0.1                    |      | 0.2  |      | 0.3  |      | 0.4  |      | 0.5  |      | 0.6  | 0.7  | 0.8  |
|                           | T STAT CALL | CFM                    | RISE | CFM  | RISE | CFM  | RISE | CFM  | RISE | CFM  | RISE | CFM  | CFM  | CFM  |
| OFF OFF*                  | W1          | 1133                   | 37   | 1009 | 41   | 956  | 43   | 903  | 46   | 856  | 48   | 804  | 774  | 722  |
|                           | W2          | 1402                   | 42   | 1358 | 44   | 1317 | 45   | 1274 | 47   | 1234 | 48   | 1195 | 1154 | 1113 |
| ON OFF**                  | W1          | 706                    | N/A  | 631  | N/A  | 563  | N/A  | 486  | N/A  | 404  | N/A  | 338  | 280  | 232  |
|                           | W2          | 1402                   | N/A  | 1358 | N/A  | 1317 | N/A  | 1274 | N/A  | 1234 | N/A  | 1195 | 1154 | 1113 |
| ON ON**                   | W1          | 706                    | N/A  | 631  | N/A  | 563  | N/A  | 486  | N/A  | 404  | N/A  | 338  | 280  | 232  |
|                           | W2          | 1160                   | N/A  | 1107 | N/A  | 1060 | N/A  | 1011 | N/A  | 965  | N/A  | 920  | 868  | 818  |
| OFF ON                    | W1          | 1160                   | 36   | 1107 | 37   | 1060 | 39   | 1011 | 41   | 965  | 43   | 920  | 868  | 818  |
|                           | W2          | 1231                   | 48   | 1185 | 50   | 1136 | 52   | 1093 | 54   | 1049 | 56   | 1004 | 956  | 908  |

\*DEFAULT

\*\*NOT RECOMMENDED

| PCBBF139                         |             | AMEC800804B* - COOLING |      |      |      |      |      |      |      |
|----------------------------------|-------------|------------------------|------|------|------|------|------|------|------|
| DIP SWITCHES<br>S1-1, S1-2, S1-3 | STATIC      | 0.1                    | 0.2  | 0.3  | 0.4  | 0.5  | 0.6  | 0.7  | 0.8  |
|                                  | T STAT CALL | CFM                    | CFM  | CFM  | CFM  | CFM  | CFM  | CFM  | CFM  |
| OFF OFF OFF*                     | Ylo         | 1574                   | 1521 | 1481 | 1439 | 1398 | 1374 | 1335 | 1295 |
|                                  | Y           | 1782                   | 1726 | 1684 | 1645 | 1610 | 1574 | 1542 | 1506 |
| ON OFF OFF                       | Ylo         | 743                    | 668  | 599  | 522  | 432  | 366  | 312  | 258  |
|                                  | Y           | 1574                   | 1521 | 1481 | 1439 | 1398 | 1374 | 1335 | 1295 |
| ON ON OFF                        | Ylo         | 743                    | 668  | 599  | 522  | 432  | 366  | 312  | 258  |
|                                  | Y           | 1782                   | 1726 | 1684 | 1645 | 1610 | 1574 | 1542 | 1506 |
| OFF ON OFF                       | Ylo         | 1574                   | 1521 | 1481 | 1439 | 1398 | 1374 | 1335 | 1295 |
|                                  | Y           | 1130                   | 1071 | 1027 | 973  | 922  | 870  | 817  | 787  |
| OFF OFF ON                       | Ylo         | 1574                   | 1521 | 1481 | 1439 | 1398 | 1374 | 1335 | 1295 |
|                                  | Y           | 1408                   | 1369 | 1319 | 1282 | 1242 | 1193 | 1150 | 1109 |
| OFF ON ON                        | Ylo         | 743                    | 668  | 599  | 522  | 432  | 366  | 312  | 258  |
|                                  | Y           | 1130                   | 1071 | 1027 | 973  | 922  | 870  | 817  | 787  |
| ON OFF ON                        | Ylo         | 1408                   | 1369 | 1319 | 1282 | 1242 | 1193 | 1150 | 1109 |
|                                  | Y           | 1782                   | 1726 | 1684 | 1645 | 1610 | 1574 | 1542 | 1506 |
| ON ON ON                         | Ylo         | 1408                   | 1369 | 1319 | 1282 | 1242 | 1193 | 1150 | 1109 |
|                                  | Y           | 743                    | 668  | 599  | 522  | 432  | 366  | 312  | 258  |

| PCBBF139                       |             | AMEC800804B* - CONTINOUS FAN |      |      |      |      |      |      |      |
|--------------------------------|-------------|------------------------------|------|------|------|------|------|------|------|
| DIP SWITCHES<br>S2-2 S2-3 S2-4 | STATIC      | 0.1                          | 0.2  | 0.3  | 0.4  | 0.5  | 0.6  | 0.7  | 0.8  |
|                                | T STAT CALL | CFM                          | CFM  | CFM  | CFM  | CFM  | CFM  | CFM  | CFM  |
| OFF OFF OFF                    | G           | 1130                         | 1071 | 1027 | 973  | 922  | 870  | 817  | 787  |
| ON OFF OFF                     | G           | 1408                         | 1369 | 1319 | 1282 | 1242 | 1193 | 1150 | 1109 |
| ON ON OFF                      | G           | 743                          | 668  | 599  | 522  | 432  | 366  | 312  | 258  |
| OFF ON OFF                     | G           | 1574                         | 1521 | 1481 | 1439 | 1398 | 1374 | 1335 | 1295 |
| OFF OFF ON                     | G           | 1782                         | 1726 | 1684 | 1645 | 1610 | 1574 | 1542 | 1506 |
| OFF ON ON                      | G           | 1130                         | 1071 | 1027 | 973  | 922  | 870  | 817  | 787  |
| ON OFF ON                      | G           | 1130                         | 1071 | 1027 | 973  | 922  | 870  | 817  | 787  |
| ON ON ON                       | G           | 1130                         | 1071 | 1027 | 973  | 922  | 870  | 817  | 787  |

| PCBBF139                  |             | AMEC800804B* - HEATING |      |      |      |      |      |      |      |      |      |      |      |      |
|---------------------------|-------------|------------------------|------|------|------|------|------|------|------|------|------|------|------|------|
| DIP SWITCHES<br>S1-4 S2-1 | STATIC      | 0.1                    |      | 0.2  |      | 0.3  |      | 0.4  |      | 0.5  |      | 0.6  | 0.7  | 0.8  |
|                           | T STAT CALL | CFM                    | RISE | CFM  | RISE | CFM  | RISE | CFM  | RISE | CFM  | RISE | CFM  | CFM  | CFM  |
| OFF OFF*                  | W1          | 1130                   | 37   | 1071 | 39   | 1027 | 40   | 973  | 43   | 922  | 45   | 870  | 817  | 787  |
|                           | W2          | 1408                   | 42   | 1369 | 43   | 1319 | 45   | 1282 | 46   | 1242 | 48   | 1193 | 1150 | 1109 |
| ON OFF                    | W1          | 743                    | 56   | 668  | N/A  | 599  | N/A  | 522  | N/A  | 432  | N/A  | 366  | 312  | 258  |
|                           | W2          | 1408                   | 42   | 1369 | 43   | 1319 | 45   | 1282 | 46   | 1242 | 48   | 1193 | 1150 | 1109 |
| ON ON**                   | W1          | 743                    | N/A  | 668  | N/A  | 599  | N/A  | 522  | N/A  | 432  | N/A  | 366  | 312  | 258  |
|                           | W2          | 1574                   | N/A  | 1521 | N/A  | 1481 | N/A  | 1439 | N/A  | 1398 | N/A  | 1374 | 1335 | 1295 |
| OFF ON                    | W1          | 1574                   | 26   | 1521 | 27   | 1481 | 28   | 1439 | 29   | 1398 | 30   | 1374 | 1335 | 1295 |
|                           | W2          | 1782                   | 33   | 1726 | 34   | 1684 | 35   | 1645 | 36   | 1610 | 37   | 1574 | 1542 | 1506 |

\*DEFAULT

\*\*NOT RECOMMENDED



| PCBBF139                         |             | AMEC800804C* - COOLING |      |      |      |      |      |      |      |
|----------------------------------|-------------|------------------------|------|------|------|------|------|------|------|
| DIP SWITCHES<br>S1-1, S1-2, S1-3 | STATIC      | 0.1                    | 0.2  | 0.3  | 0.4  | 0.5  | 0.6  | 0.7  | 0.8  |
|                                  | T STAT CALL | CFM                    | CFM  | CFM  | CFM  | CFM  | CFM  | CFM  | CFM  |
| OFF OFF OFF*                     | Ylo         | 1466                   | 1399 | 1347 | 1290 | 1230 | 1170 | 1112 | 1054 |
|                                  | Y           | 1904                   | 1832 | 1777 | 1727 | 1678 | 1630 | 1579 | 1523 |
| ON OFF OFF                       | Ylo         | 822                    | 754  | 652  | 566  | 499  | 428  | 346  | 294  |
|                                  | Y           | 1466                   | 1399 | 1347 | 1290 | 1230 | 1170 | 1112 | 1054 |
| ON ON OFF                        | Ylo         | 822                    | 754  | 652  | 566  | 499  | 428  | 346  | 294  |
|                                  | Y           | 1904                   | 1832 | 1777 | 1727 | 1678 | 1630 | 1579 | 1523 |
| OFF ON OFF                       | Ylo         | 1466                   | 1399 | 1347 | 1290 | 1230 | 1170 | 1112 | 1054 |
|                                  | Y           | 1352                   | 1281 | 1218 | 1152 | 1076 | 1026 | 964  | 901  |
| OFF OFF ON                       | Ylo         | 1466                   | 1399 | 1347 | 1290 | 1230 | 1170 | 1112 | 1054 |
|                                  | Y           | 1669                   | 1595 | 1527 | 1463 | 1407 | 1363 | 1336 | 1289 |
| OFF ON ON                        | Ylo         | 822                    | 754  | 652  | 566  | 499  | 428  | 346  | 294  |
|                                  | Y           | 1352                   | 1281 | 1218 | 1152 | 1076 | 1026 | 964  | 901  |
| ON OFF ON                        | Ylo         | 1669                   | 1595 | 1527 | 1463 | 1407 | 1363 | 1336 | 1289 |
|                                  | Y           | 1904                   | 1832 | 1777 | 1727 | 1678 | 1630 | 1579 | 1523 |
| ON ON ON                         | Ylo         | 1669                   | 1595 | 1527 | 1463 | 1407 | 1363 | 1336 | 1289 |
|                                  | Y           | 822                    | 754  | 652  | 566  | 499  | 428  | 346  | 294  |

| PCBBF139                       |             | AMEC800804C* - CONTINOUS FAN |      |      |      |      |      |      |      |
|--------------------------------|-------------|------------------------------|------|------|------|------|------|------|------|
| DIP SWITCHES<br>S2-2 S2-3 S2-4 | STATIC      | 0.1                          | 0.2  | 0.3  | 0.4  | 0.5  | 0.6  | 0.7  | 0.8  |
|                                | T STAT CALL | CFM                          | CFM  | CFM  | CFM  | CFM  | CFM  | CFM  | CFM  |
| OFF OFF OFF                    | G           | 1352                         | 1281 | 1218 | 1152 | 1076 | 1026 | 964  | 901  |
| ON OFF OFF                     | G           | 1669                         | 1595 | 1527 | 1463 | 1407 | 1363 | 1336 | 1289 |
| ON ON OFF                      | G           | 822                          | 754  | 652  | 566  | 499  | 428  | 346  | 294  |
| OFF ON OFF                     | G           | 1466                         | 1399 | 1347 | 1290 | 1230 | 1170 | 1112 | 1054 |
| OFF OFF ON                     | G           | 1904                         | 1832 | 1777 | 1727 | 1678 | 1630 | 1579 | 1523 |
| OFF ON ON                      | G           | 1352                         | 1281 | 1218 | 1152 | 1076 | 1026 | 964  | 901  |
| ON OFF ON                      | G           | 1352                         | 1281 | 1218 | 1152 | 1076 | 1026 | 964  | 901  |
| ON ON ON                       | G           | 1352                         | 1281 | 1218 | 1152 | 1076 | 1026 | 964  | 901  |

| PCBBF139                  |             | AMEC800804C* - HEATING |      |      |      |      |      |      |      |      |      |      |      |      |
|---------------------------|-------------|------------------------|------|------|------|------|------|------|------|------|------|------|------|------|
| DIP SWITCHES<br>S1-4 S2-1 | STATIC      | 0.1                    |      | 0.2  |      | 0.3  |      | 0.4  |      | 0.5  |      | 0.6  | 0.7  | 0.8  |
|                           | T STAT CALL | CFM                    | RISE | CFM  | RISE | CFM  | RISE | CFM  | RISE | CFM  | RISE | CFM  | CFM  | CFM  |
| OFF OFF*                  | W1          | 1352                   | 31   | 1281 | 32   | 1218 | 34   | 1152 | 36   | 1076 | 39   | 1026 | 964  | 901  |
|                           | W2          | 1669                   | 36   | 1595 | 37   | 1527 | 39   | 1463 | 41   | 1407 | 42   | 1363 | 1336 | 1289 |
| ON OFF                    | W1          | 822                    | 50   | 754  | 55   | 652  | N/A  | 566  | N/A  | 499  | N/A  | 428  | 346  | 294  |
|                           | W2          | 1669                   | 36   | 1595 | 37   | 1527 | 39   | 1463 | 41   | 1407 | 42   | 1363 | 1336 | 1289 |
| ON ON                     | W1          | 822                    | 50   | 754  | 55   | 652  | N/A  | 566  | N/A  | 499  | N/A  | 428  | 346  | 294  |
|                           | W2          | 1466                   | 40   | 1399 | 42   | 1347 | 44   | 1290 | 46   | 1230 | 48   | 1170 | 1112 | 1054 |
| OFF ON                    | W1          | 1466                   | 28   | 1399 | 30   | 1347 | 31   | 1290 | 32   | 1230 | 34   | 1170 | 1112 | 1054 |
|                           | W2          | 1904                   | 31   | 1832 | 32   | 1777 | 33   | 1727 | 34   | 1678 | 35   | 1630 | 1579 | 1523 |

\*DEFAULT  
 \*\*NOT RECOMMENDED

| PCBBF139                         |             | AMEC800805D* - COOLING |      |      |      |      |      |      |      |
|----------------------------------|-------------|------------------------|------|------|------|------|------|------|------|
| DIP SWITCHES<br>S1-1, S1-2, S1-3 | STATIC      | 0.1                    | 0.2  | 0.3  | 0.4  | 0.5  | 0.6  | 0.7  | 0.8  |
|                                  | T STAT CALL | CFM                    | CFM  | CFM  | CFM  | CFM  | CFM  | CFM  | CFM  |
| OFF OFF OFF*                     | Ylo         | 1698                   | 1621 | 1553 | 1497 | 1437 | 1393 | 1328 | 1270 |
|                                  | Y           | 2266                   | 2202 | 2143 | 2090 | 2040 | 1995 | 1945 | 1896 |
| ON OFF OFF                       | Ylo         | 1088                   | 999  | 899  | 772  | 667  | 561  | 490  | 418  |
|                                  | Y           | 1698                   | 1621 | 1553 | 1497 | 1437 | 1393 | 1328 | 1270 |
| ON ON OFF                        | Ylo         | 1088                   | 999  | 899  | 772  | 667  | 561  | 490  | 418  |
|                                  | Y           | 2266                   | 2202 | 2143 | 2090 | 2040 | 1995 | 1945 | 1896 |
| OFF ON OFF                       | Ylo         | 1698                   | 1621 | 1553 | 1497 | 1437 | 1393 | 1328 | 1270 |
|                                  | Y           | 1450                   | 1382 | 1314 | 1243 | 1181 | 1115 | 1047 | 973  |
| OFF OFF ON                       | Ylo         | 1698                   | 1621 | 1553 | 1497 | 1437 | 1393 | 1328 | 1270 |
|                                  | Y           | 1886                   | 1822 | 1758 | 1701 | 1646 | 1591 | 1535 | 1482 |
| OFF ON ON                        | Ylo         | 1088                   | 999  | 899  | 772  | 667  | 561  | 490  | 418  |
|                                  | Y           | 1450                   | 1382 | 1314 | 1243 | 1181 | 1115 | 1047 | 973  |
| ON OFF ON                        | Ylo         | 1886                   | 1822 | 1758 | 1701 | 1646 | 1591 | 1535 | 1482 |
|                                  | Y           | 2266                   | 2202 | 2143 | 2090 | 2040 | 1995 | 1945 | 1896 |
| ON ON ON                         | Ylo         | 1886                   | 1822 | 1758 | 1701 | 1646 | 1591 | 1535 | 1482 |
|                                  | Y           | 1088                   | 999  | 899  | 772  | 667  | 561  | 490  | 418  |

| PCBBF139                       |             | AMEC800805D* - CONTINOUS FAN |      |      |      |      |      |      |      |
|--------------------------------|-------------|------------------------------|------|------|------|------|------|------|------|
| DIP SWITCHES<br>S2-2 S2-3 S2-4 | STATIC      | 0.1                          | 0.2  | 0.3  | 0.4  | 0.5  | 0.6  | 0.7  | 0.8  |
|                                | T STAT CALL | CFM                          | CFM  | CFM  | CFM  | CFM  | CFM  | CFM  | CFM  |
| OFF OFF OFF                    | G           | 1450                         | 1382 | 1314 | 1243 | 1181 | 1115 | 1047 | 973  |
| ON OFF OFF                     | G           | 1886                         | 1822 | 1758 | 1701 | 1646 | 1591 | 1535 | 1482 |
| ON ON OFF                      | G           | 1088                         | 999  | 899  | 772  | 667  | 561  | 490  | 418  |
| OFF ON OFF                     | G           | 1698                         | 1621 | 1553 | 1497 | 1437 | 1393 | 1328 | 1270 |
| OFF OFF ON                     | G           | 2266                         | 2202 | 2143 | 2090 | 2040 | 1995 | 1945 | 1896 |
| OFF ON ON                      | G           | 1450                         | 1382 | 1314 | 1243 | 1181 | 1115 | 1047 | 973  |
| ON OFF ON                      | G           | 1450                         | 1382 | 1314 | 1243 | 1181 | 1115 | 1047 | 973  |
| ON ON ON                       | G           | 1450                         | 1382 | 1314 | 1243 | 1181 | 1115 | 1047 | 973  |

| PCBBF139                  |             | AMEC800805D* - HEATING |      |      |      |      |      |      |      |      |      |      |      |      |
|---------------------------|-------------|------------------------|------|------|------|------|------|------|------|------|------|------|------|------|
| DIP SWITCHES<br>S1-4 S2-1 | STATIC      | 0.1                    |      | 0.2  |      | 0.3  |      | 0.4  |      | 0.5  |      | 0.6  | 0.7  | 0.8  |
|                           | T STAT CALL | CFM                    | RISE | CFM  | RISE | CFM  | RISE | CFM  | RISE | CFM  | RISE | CFM  | CFM  | CFM  |
| OFF OFF*                  | W1          | 1450                   | 29   | 1382 | 30   | 1314 | 32   | 1243 | 33   | 1181 | 35   | 1115 | 1047 | 973  |
|                           | W2          | 1886                   | 31   | 1822 | 33   | 1758 | 34   | 1701 | 35   | 1646 | 36   | 1591 | 1535 | 1482 |
| ON OFF                    | W1          | 1088                   | 38   | 999  | 42   | 899  | 46   | 772  | N/A  | 667  | N/A  | 561  | 490  | 418  |
|                           | W2          | 1886                   | 31   | 1822 | 33   | 1758 | 34   | 1701 | 35   | 1646 | 36   | 1591 | 1535 | 1482 |
| ON ON                     | W1          | 1088                   | 38   | 999  | 42   | 899  | 46   | 772  | N/A  | 667  | N/A  | 561  | 490  | 418  |
|                           | W2          | 1698                   | 35   | 1621 | 37   | 1553 | 38   | 1497 | 40   | 1437 | 41   | 1393 | 1328 | 1270 |
| OFF ON                    | W1          | 1698                   | 24   | 1621 | 26   | 1553 | 27   | 1497 | 28   | 1437 | 29   | 1393 | 1328 | 1270 |
|                           | W2          | 2266                   | 26   | 2202 | 27   | 2143 | 28   | 2090 | 28   | 2040 | 29   | 1995 | 1945 | 1896 |

\*DEFAULT

\*\*NOT RECOMMENDED

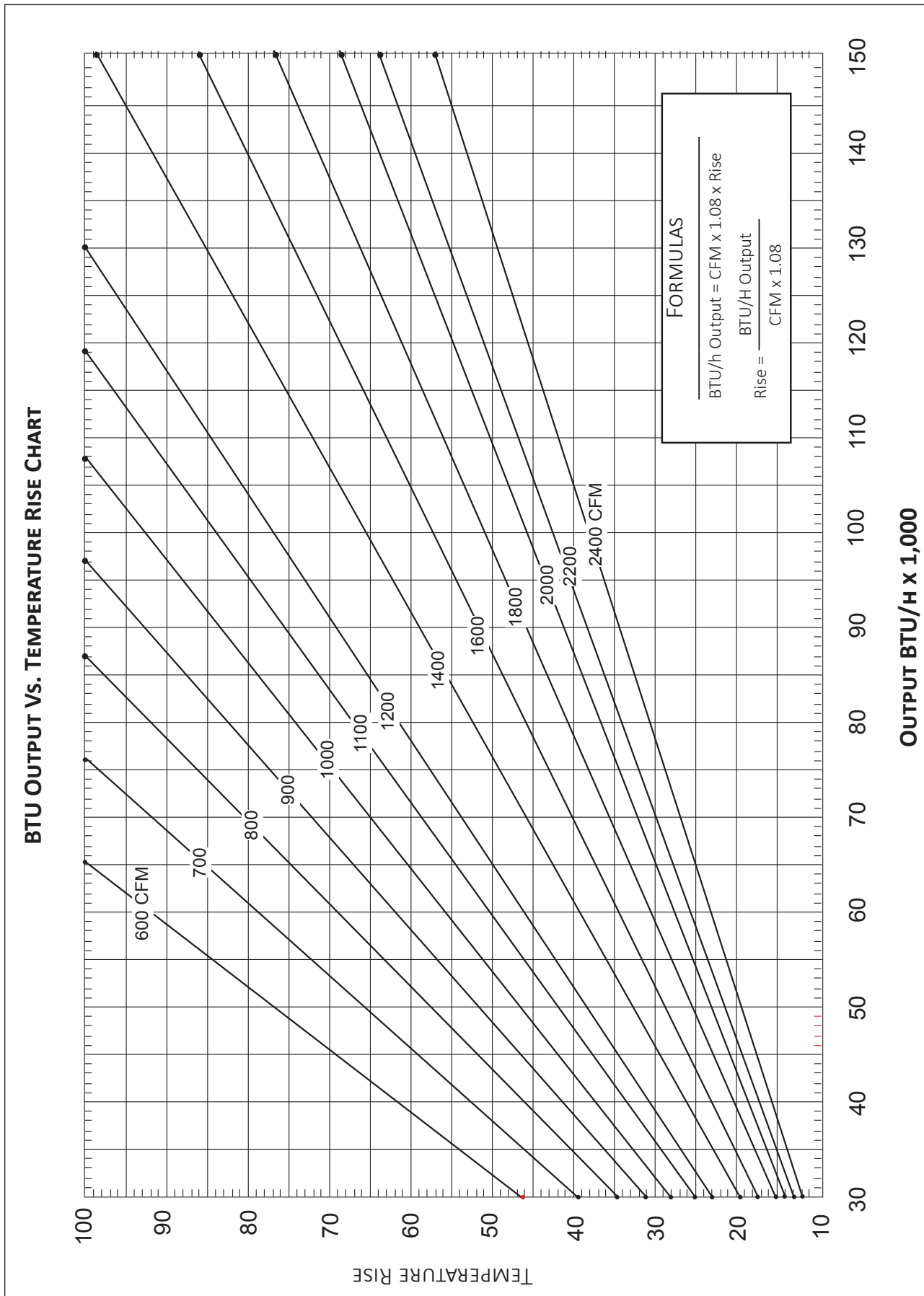
| PCBBF139                         |             | AMEC800805C* - COOLING |      |      |      |      |      |      |      |
|----------------------------------|-------------|------------------------|------|------|------|------|------|------|------|
| DIP SWITCHES<br>S1-1, S1-2, S1-3 | STATIC      | 0.1                    | 0.2  | 0.3  | 0.4  | 0.5  | 0.6  | 0.7  | 0.8  |
|                                  | T STAT CALL | CFM                    | CFM  | CFM  | CFM  | CFM  | CFM  | CFM  | CFM  |
| OFF OFF OFF*                     | Ylo         | 1583                   | 1536 | 1515 | 1478 | 1434 | 1383 | 1317 | 1265 |
|                                  | Y           | 2145                   | 2089 | 2058 | 2036 | 2020 | 2000 | 1971 | 1935 |
| ON OFF OFF                       | Ylo         | 1171                   | 884  | 667  | 576  | 495  | 399  | 338  | 302  |
|                                  | Y           | 1583                   | 1536 | 1515 | 1478 | 1434 | 1383 | 1317 | 1265 |
| ON ON OFF                        | Ylo         | 1171                   | 884  | 667  | 576  | 495  | 399  | 338  | 302  |
|                                  | Y           | 2145                   | 2089 | 2058 | 2036 | 2020 | 2000 | 1971 | 1935 |
| OFF ON OFF                       | Ylo         | 1583                   | 1536 | 1515 | 1478 | 1434 | 1383 | 1317 | 1265 |
|                                  | Y           | 1436                   | 1402 | 1362 | 1313 | 1244 | 1182 | 1132 | 1079 |
| OFF OFF ON                       | Ylo         | 1583                   | 1536 | 1515 | 1478 | 1434 | 1383 | 1317 | 1265 |
|                                  | Y           | 1782                   | 1744 | 1715 | 1700 | 1660 | 1619 | 1579 | 1510 |
| OFF ON ON                        | Ylo         | 1171                   | 884  | 667  | 576  | 495  | 399  | 338  | 302  |
|                                  | Y           | 1436                   | 1402 | 1362 | 1313 | 1244 | 1182 | 1132 | 1079 |
| ON OFF ON                        | Ylo         | 1782                   | 1744 | 1715 | 1700 | 1660 | 1619 | 1579 | 1510 |
|                                  | Y           | 2145                   | 2089 | 2058 | 2036 | 2020 | 2000 | 1971 | 1935 |
| ON ON ON                         | Ylo         | 1782                   | 1744 | 1715 | 1700 | 1660 | 1619 | 1579 | 1510 |
|                                  | Y           | 1171                   | 884  | 667  | 576  | 495  | 399  | 338  | 302  |

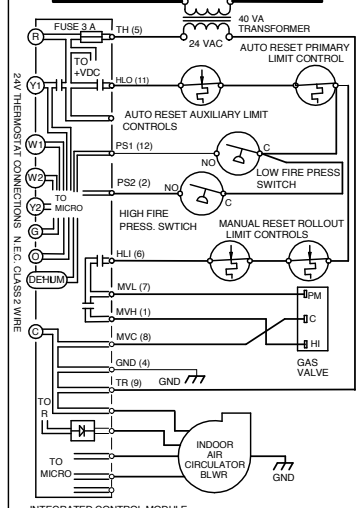
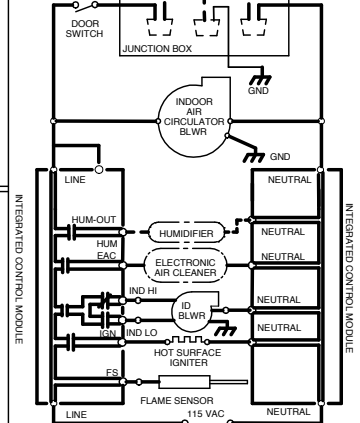
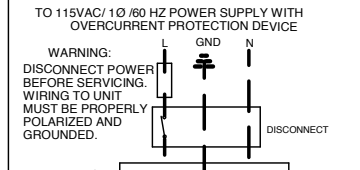
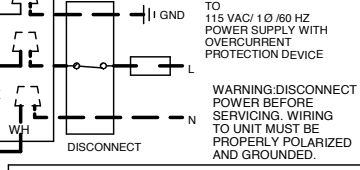
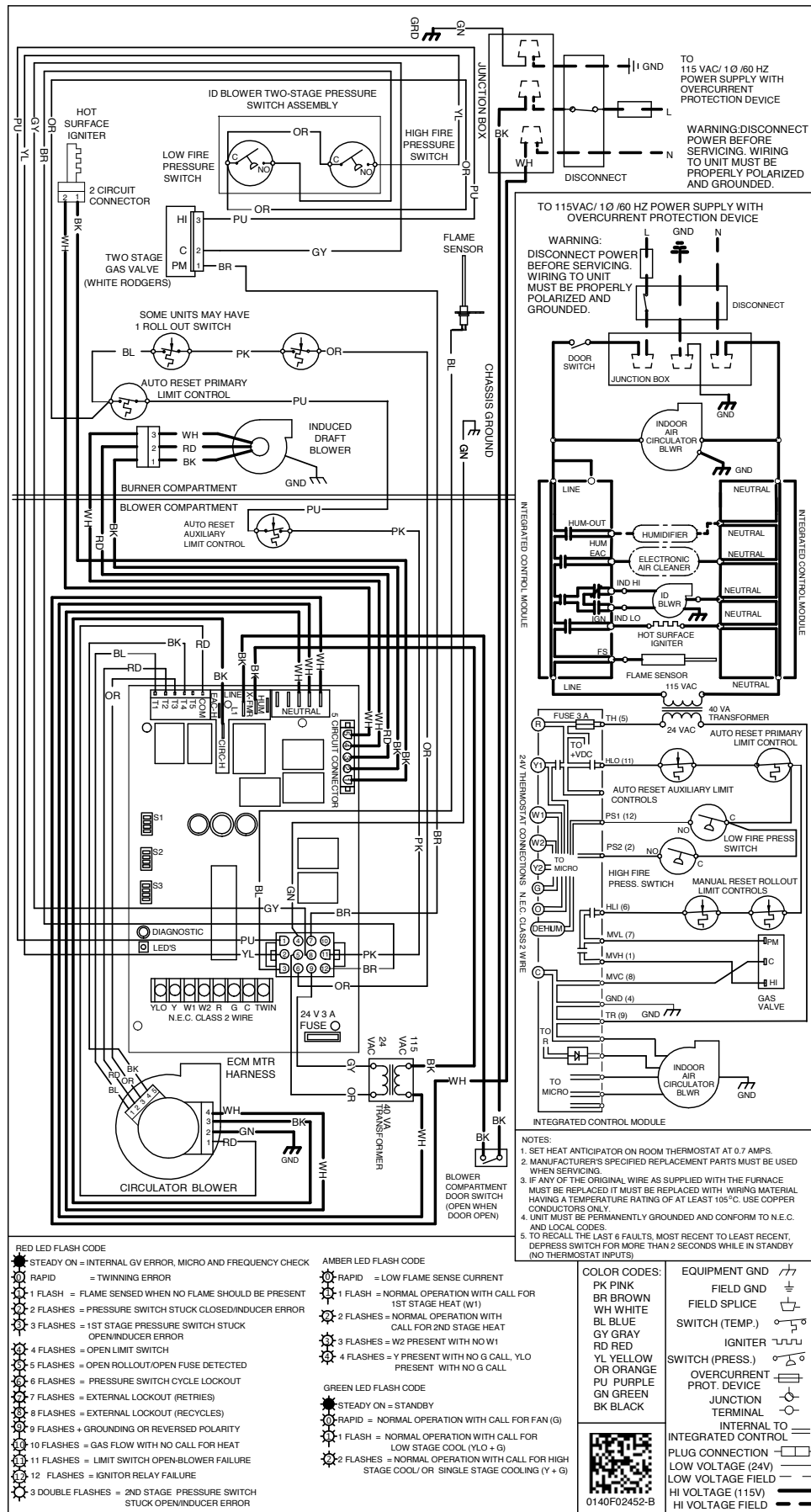
| PCBBF139                       |             | AMEC800805C* - CONTINOUS FAN |      |      |      |      |      |      |      |
|--------------------------------|-------------|------------------------------|------|------|------|------|------|------|------|
| DIP SWITCHES<br>S2-2 S2-3 S2-4 | STATIC      | 0.1                          | 0.2  | 0.3  | 0.4  | 0.5  | 0.6  | 0.7  | 0.8  |
|                                | T STAT CALL | CFM                          | CFM  | CFM  | CFM  | CFM  | CFM  | CFM  | CFM  |
| OFF OFF OFF                    | G           | 1436                         | 1402 | 1362 | 1313 | 1244 | 1182 | 1132 | 1079 |
| ON OFF OFF                     | G           | 1782                         | 1744 | 1715 | 1700 | 1660 | 1619 | 1579 | 1510 |
| ON ON OFF                      | G           | 1171                         | 884  | 667  | 576  | 495  | 399  | 338  | 302  |
| OFF ON OFF                     | G           | 1583                         | 1536 | 1515 | 1478 | 1434 | 1383 | 1317 | 1265 |
| OFF OFF ON                     | G           | 2145                         | 2089 | 2058 | 2036 | 2020 | 2000 | 1971 | 1935 |
| OFF ON ON                      | G           | 1436                         | 1402 | 1362 | 1313 | 1244 | 1182 | 1132 | 1079 |
| ON OFF ON                      | G           | 1436                         | 1402 | 1362 | 1313 | 1244 | 1182 | 1132 | 1079 |
| ON ON ON                       | G           | 1436                         | 1402 | 1362 | 1313 | 1244 | 1182 | 1132 | 1079 |

| PCBBF139                  |             | AMEC800805C* - HEATING |      |      |      |      |      |      |      |      |      |      |      |      |
|---------------------------|-------------|------------------------|------|------|------|------|------|------|------|------|------|------|------|------|
| DIP SWITCHES<br>S1-4 S2-1 | STATIC      | 0.1                    |      | 0.2  |      | 0.3  |      | 0.4  |      | 0.5  |      | 0.6  | 0.7  | 0.8  |
|                           | T STAT CALL | CFM                    | RISE | CFM  | RISE | CFM  | RISE | CFM  | RISE | CFM  | RISE | CFM  | CFM  | CFM  |
| OFF OFF*                  | W1          | 1436                   | 29   | 1402 | 30   | 1362 | 30   | 1313 | 32   | 1244 | 33   | 1182 | 1132 | 1079 |
|                           | W2          | 1782                   | 33   | 1744 | 34   | 1715 | 35   | 1700 | 35   | 1660 | 36   | 1619 | 1579 | 1510 |
| ON OFF                    | W1          | 1171                   | 35   | 884  | 47   | 667  | N/A  | 576  | N/A  | 495  | N/A  | 399  | 338  | 302  |
|                           | W2          | 1782                   | 33   | 1744 | 34   | 1715 | 35   | 1700 | 35   | 1660 | 36   | 1619 | 1579 | 1510 |
| ON ON                     | W1          | 1171                   | 35   | 884  | 47   | 667  | N/A  | 576  | N/A  | 495  | N/A  | 399  | 338  | 302  |
|                           | W2          | 1583                   | 37   | 1536 | 39   | 1515 | 39   | 1478 | 40   | 1434 | 41   | 1383 | 1317 | 1265 |
| OFF ON**                  | W1          | 1583                   | N/A  | 1536 | N/A  | 1515 | N/A  | 1478 | N/A  | 1434 | N/A  | 1383 | 1317 | 1265 |
|                           | W2          | 2145                   | N/A  | 2089 | N/A  | 2058 | N/A  | 2036 | N/A  | 2020 | N/A  | 2000 | 1971 | 1935 |

\*DEFAULT

\*\*NOT RECOMMENDED





- NOTES:
1. SET HEAT ANTICIPATOR ON ROOM THERMOSTAT AT 0.7 AMPS.
  2. MANUFACTURER'S SPECIFIED REPLACEMENT PARTS MUST BE USED WHEN SERVICING.
  3. IF ANY OF THE ORIGINAL WIRE AS SUPPLIED WITH THE FURNACE MUST BE REPLACED IT MUST BE REPLACED WITH WIRING MATERIAL HAVING A TEMPERATURE RATING OF AT LEAST 105°C. USE COPPER CONDUCTORS ONLY.
  4. UNIT MUST BE PERMANENTLY GROUNDED AND CONFORM TO N.E.C. AND LOCAL CODES.
  5. TO RECALL THE LAST 6 FAULTS, MOST RECENT TO LEAST RECENT, DEPRESS SWITCH FOR MORE THAN 2 SECONDS WHILE IN STANDBY (NO THERMOSTAT INPUTS).

- RED LED FLASH CODE
- STEADY ON = INTERNAL GV ERROR, MICRO AND FREQUENCY CHECK
  - RAPID = TWINNING ERROR
  - 1 FLASH = FLAME SENSED WHEN NO FLAME SHOULD BE PRESENT
  - 2 FLASHES = PRESSURE SWITCH STUCK CLOSED/INDUCER ERROR
  - 3 FLASHES = 1ST STAGE PRESSURE SWITCH STUCK OPEN/INDUCER ERROR
  - 4 FLASHES = OPEN LIMIT SWITCH
  - 5 FLASHES = OPEN ROLLOUT/OPEN FUSE DETECTED
  - 6 FLASHES = PRESSURE SWITCH CYCLE LOCKOUT
  - 7 FLASHES = EXTERNAL LOCKOUT (RETRIES)
  - 8 FLASHES = EXTERNAL LOCKOUT (RECYCLES)
  - 9 FLASHES + GROUNDING OR REVERSED POLARITY
  - 10 FLASHES = GAS FLOW WITH NO CALL FOR HEAT
  - 11 FLASHES = LIMIT SWITCH OPEN-BLOWER FAILURE
  - 12 FLASHES = IGNITOR RELAY FAILURE
  - 3 DOUBLE FLASHES = 2ND STAGE PRESSURE SWITCH STUCK OPEN/INDUCER ERROR

- AMBER LED FLASH CODE
- RAPID = LOW FLAME SENSE CURRENT
  - 1 FLASH = NORMAL OPERATION WITH CALL FOR 1ST STAGE HEAT (W1)
  - 2 FLASHES = NORMAL OPERATION WITH CALL FOR 2ND STAGE HEAT
  - 3 FLASHES = W2 PRESENT WITH NO W1
  - 4 FLASHES = Y PRESENT WITH NO G CALL, YLO PRESENT WITH NO G CALL
- GREEN LED FLASH CODE
- STEADY ON = STANDBY
  - RAPID = NORMAL OPERATION WITH CALL FOR FAN (G)
  - 1 FLASH = NORMAL OPERATION WITH CALL FOR LOW STAGE COOL (YLO + G)
  - 2 FLASHES = NORMAL OPERATION WITH CALL FOR HIGH STAGE COOL/ OR SINGLE STAGE COOLING (Y + G)

COLOR CODES:

- PK PINK
- BR BROWN
- WH WHITE
- BL BLUE
- GY GRAY
- RD RED
- YL YELLOW
- OR ORANGE
- PU PURPLE
- GN GREEN
- BK BLACK

EQUIPMENT GND

- FIELD GND
- FIELD SPICE
- SWITCH (TEMP.)
- IGNITER
- SWITCH (PRESS.)
- OVERCURRENT PROT. DEVICE
- JUNCTION
- TERMINAL

INTERNAL TO INTEGRATED CONTROL

- PLUG CONNECTION
- LOW VOLTAGE (24V)
- LOW VOLTAGE FIELD
- HI VOLTAGE (115V)
- HI VOLTAGE FIELD

0140F02452-B

**WARNING**

High Voltage: Disconnect all power before servicing or installing this unit. Multiple power sources may be present. Failure to do so may cause property damage, personal injury, or death.

Wiring is subject to change. Always refer to the wiring diagram or the unit for the most up-to-date wiring.

